

# THE STAMPER BATTERY CHRISTMAS (Dec 2004) EDITION



## CHRISTMAS HAPPENINGS

### CHRISTMAS TREE

How many men does it take to raise a Christmas tree?

All the patrons of the Royal Hotel under the watchful guidance of Maxine Anderson. How did they ever do it before Bernie Baker and one of his toys, a big truck with a crane?

RC

### SANTA DROPS IN

There were traditional games for the kids at the Cricket Ground before the arrival of Santa at the annual Christmas Tree gathering. Santa arrived via fire truck with sirens blaring adding to the overall excitement of the occasion.

RC

### SCHOOL PRESENTATION NIGHT

It is part of Christmas in Hill End. We all look forward and enjoy the School play. This year, it revolved around the horrible Sock Monster, who steals odd socks, so now you know whom to blame, not the washing machine. The play included, by strange chance, some pirates, who said,

as all pirates do, "Swab the decks, ye scum".

But the highlight was a visit to Poseidon's Kingdom. Ultra-violet lighting made the decorations glow as kids danced across the stage to full orchestral accompaniment. Some carried bright fishes and others had streamers on their dresses, which made them look like shiny octopuses. Poseidon himself arrived in triumphal glory and happily the disparate threads of this story were brought together before the end. The moral of the story is that a clean bedroom defeats the Sock Monster. So, remember that.

RC

### CAROLS BY RAINFALL

It was the threat of rain that caused the singing to take place in the Royal Hall this year. We have had some big falls of rain lately, some quite violent, but this was soft steady rain that did more than create a run off to fill the dams, this rain penetrated. We've had about 6 inches, which hopefully hasn't ruined a good cherry crop. We need more occasions for the ladies to wear dresses; they all looked so beautiful that night.

RC

### A PINE MEDITATION

Christmas is a time when many households and business places tend to not only decorate but even venerate the humble pine tree in a central position within the family home or workplace, a strange synchronicity perhaps that simultaneously the pine tree eradication plan is in full force. Guard your tree.

Editor

# THE STAMPER BATTERY CHRISTMAS (Dec 2004) EDITION

## HETPA PRESIDENT'S REPORT

Thankyou, to all the volunteers who worked with the Progress Association over the last year, without them things wouldn't have got done.

The Committee and I want to wish all our members a safe and happy Christmas and a prosperous New Year.

I also want to thank Kath Knowles and David Sherley, the General Manager and Brian Dwyer, Director of Corporate Services, both of Bathurst Regional Council for coming to the last Progress Association Meeting of the year. It is good for Council to hear first hand from the Community.

There are two programs running concurrently with the Department of Corrective Services. One is with the Periodic Detention Centre and the other is with the Community Service Order Department. The latter will only be working on the stone drains and they are doing a mighty fine job, as you will see as you drive up to the Visitors' Centre. The PDC are still working at the Cemetery and doing the roadside cleaning.

People are beginning to comment that the Cemetery now looks cared for, which makes the effort worthwhile.

In the New Year, I will be coordinating a new initiative, 'the Young Eagles'. This is a program I was involved in the USA. Young people ages 8 to 17 from Hill End through to Hargraves will have the opportunity to participate in an Aviation day. I have been talking to various aircraft operators in Mudgee to give the kids the chance to fly for free,

in a small plane or helicopter. We are hoping to get, say 40 kids for a joy flight and a talk on flying. The purpose is to promote aircraft awareness, plus the thrill of flying. We will be tying it into the USA program, where it is well established. More information will be sent out in the New Year to all families.

There were three helicopter loads of TV and film executives here to look at Hill End for its potential for locations for film and commercials. It was a very successful visit.

Cobb & Co will be back at Easter giving rides; they've worked out their insurance and also for the Music Festival, a month later.

Progress will be approaching the responsible parties to get William Street sealed. It comes from the Bridle Track to the School. A lot of dust blows into the School on dry, windy days.

Finally, I want to congratulate Mrs Price and Mrs Groves on the outstanding performance by the School on Presentation Night it was a tribute to all who were involved. I particularly want to thank all the students, they acted out the story really well and the play provided great entertainment for the Community.

**Barrie Rogers  
President  
HETPA**

# THE STAMPER BATTERY CHRISTMAS (Dec 2004) EDITION

## PARK LIFE

The Pine Tree Eradication Program commenced with a crew from Bathurst helping. Also, TAFE was working near the Visitors' Centre, conducting chain saw courses and that was a chance for further eradication. We are looking to replace the trees we removed as a result of the recent safety audit and have been looking at advanced trees from Birch's Nursery at Hargraves. They are 8-10 ft high and we expect to plant them in January.

We have a temporary addition in Lachlan Willey. He is under contract to the Service as a grounds-person. Advertising for the positions of Field Officers and a Senior Field Supervisor will take place early next year.

We are pleased to announce the leasing of the 'Holtermann Complex' to Mrs P Holloway. The main building has been unused for a number of years and it is great to know it will now be permanently occupied.

At the Museum, the horse tack, as it's called, has been taken out of Archives, cleaned and the leather polished. The bridles, yokes and harnesses have been identified in relation to the Hill End Hearse, which is being returned by the Australian National Museum. Another set has been identified as Army Surplus; it is dated 1914, and was probably used to pull a cannon around in the Great War. The Hearse is a four horse-drawn vehicle and will be displayed in Lyle's Shed on its return. We look forward to again working closely with the community in the new year and wish everyone a safe and happy christmas.

**PETER MYLER  
AREA MANAGER**

## PEOPLE

### **SUE THOMSON'S MOTHER**

Peggy Holloway [no relation to Grace and Roy] has come down from Queensland, which was where Sue was before Hill End.

She has moved into Holterman's Corner, which could be readily renamed Thomson's Corner. It is wonderful news for the town as the main building has been empty from time immemorial. The shop will become a Doll and Teddy Bear Museum, open on long weekends, not full time. Peggy once owned a company that made teddy bears and porcelain dolls, "which is how I got into it," Sue said. "The place where Brett Hilder used to live, will become a Collectables shop sometime in the future."

Sue's alpaca has, she tells us, has been shorn and looks more like a reindeer, appropriately.

**RC**

### **LACHLAN ARRIVES**

Lachlan Willey is Trish Allan's brother and it was he who removed the For Sale sign on the Schoolmaster's House. At present, he is under contract to the Parks Service for a five-week period. He is intending to become a permanent member of the community.

**RC**

### **KAREN CHIN DEPARTS**

She will be missed for the warmth of her personality and her zany sense of humour, which was often self-deprecating.

**RC**

### **KAREN TYLER DEPARTS**

With 20% of the School. The family will be moving to Seal Rocks. It will be interesting to see how the sea changes her children.

**RC**

# THE STAMPER BATTERY

## CHRISTMAS (Dec 2004) EDITION

### LYNDA TOMPKINS

Has recovered from a heart attack. They seem more manageable these days.

RC

### MARILYN TUNBRIDGE

Was back in town briefly, looking extremely well and boasting of the height of her tomato plants to Brian Hodge. Living on the Coast, things grow faster and earlier.

RC

---

### FOND MEMORIES

#### BERYL BLIIM

The Progress Association held a minute's silence for Beryl at its last meeting. She is still sadly missed. She was much loved by everyone for her kindness, her thoughtfulness and her mischievous sense of humour.

---

#### SENIOR FIRST AID

Progress sponsored 13 people to do the course, including four school students, which is good. Three people want to do the First Responders Course, which is very good. It just shows how the determined efforts of one member of the community can make something happen.

Barrie has done a tally---out of 120 people, 40 have some first-aid knowledge, better than Sydney?

RC

#### SHEDS AROUND THE VILLAGE

There was vigorous discussion at the last Progress Association meeting about the sheds that have recently sprung up through town.

It was good that Kath Knowles was there to hear of the town's concerns. The Meeting was divided on the issue and it is a matter that needs to be resolved.

Without going into the debate, the Draft Local Environmental Plan (LEP) is available for your perusal and you ought to respond to it. By doing so you can contribute to the solution. Now is the time to have your say. Respond whether you are for or against. The Heritage Area ought to be preserved and we should get the Council to consult with the people and Parks before granting Building Approval for structures we will later resent. There are some exclusions for Hill End, taken from the Evans LEP, but in this document they are not defined. It would appear that Bathurst Regional Council has not yet come to grips with the special nature of Hill End. So, do it now. Respond. The immediate solution to the present sheds is planting, but what of other people's future needs for extra space?

RC

What of that unique character of Hill End, the reason the town attracts visitors, who then in turn patronise local businesses, it's a time capsule like atmosphere here and is indeed most fragile, so easily lost and totally irreplaceable.

A recognised Historic Site deserves respect.

According to Barrie Rogers we get 50,000 visitors a year.

Editor

# THE STAMPER BATTERY CHRISTMAS (Dec 2004) EDITION

## BIKE RIDERS

They came in assorted cars with a black Porsche and a shiny white Mustang convertible from the 60s. They came on Ducatis bright red and BMWs grey They came, The Legal Eagles, motorcycle and car rally boys and girls, Professions legal and otherwise. They came from Mudgee after conducting a night mock trial with humour, and good red wines. They didn't come last year because of the wedding of actor/artist Max Cullen. .They made it this year, they came on a sunny Sunday morning to the hill at the end and "the Eagles" leader, the producer/director, Karl McPhee, made a beautiful picture of Donna-Lee.

**Brett Hilder**



**Karl McPhee**

---

## ROADS

On the subject of travel, road sealing is advancing from both directions. Below Monkey Hill by Bathurst Regional Council and outside Wyoming by Mudgee Council, "exactly one kilometre", said Col Shapland. We all have very mixed feelings about this closer attachment to

the outside world, we don't want to make it too easy.

Kath Knowles acknowledged the need for a grade on the road above Monkey Hill and on the Bridle Track. "Before Christmas", she said.

Some time ago, Big Al said, "The consultants have worn the road out."

**RC**

## THE GENERAL STORE

Donna-lee King, the now not so new proprietor of the Hill End General Store is introducing the Library to the Shop. Bathurst Library will be stocking the shelves with 2-300 books. This will be larger than was available at the School and will be much more visible, so borrowings will be greater. It will be an added service to our Community, so thanks Donna.

**RC**

## LIBRARY VAN

This service will continue. The first visitation of the New Year will be Wednesday 16<sup>th</sup> February. "The service is so good," Allan Dennington said, "they just bring me the books they think I would like. Now that's service!"

**RC**

## HILL END GOLD LIMITED

It continues in its search for gold and it will find it. The tests prove it. There is gold down there waiting for them. Wait and see.

**RC**

# THE STAMPER BATTERY CHRISTMAS (Dec 2004) EDITION

## WOTALOT GOLD EXPERIENCE

Phil Wilkins is preparing his property for Gold Tours. There is a lot of history there, which Harry Hodge describes in his second book [page 84], Dirtholes beat Tambaroora with alluvial gold by a few weeks...later, the mines fed ore to the nearby Roasting Pits, but not for long. On December 6, 1874, the Herald supplied the epitaph: "the Dirtholes is silent".

Hodge tells us that the first mention of reef mining there was in 1871, but the yields from Green Valley were not as rich as Hawkins Hill, which came on later. In June 1872, the Herald reported, "The name Green Valley is a poetical imposture. It consists of about 100 wattle and daub and calico houses, which seem poor protection against the winter."

Just over a year later, it said, "Green Valley is almost deserted...the last Public House dispenses cordials as it has no money to pay for a licence.". The workings on the property are extensive, Phil pointed to the tailings from alluvial extraction in Dirtholes Creek. There are many chimneys and foundations of the meagre houses where people lived. Of great interest are the channels and water races. Phil traces them out as you move amongst them. He feels that 150 years ago, the creek was higher up, where there is evidence of damming and settling ponds, now silted up, and channels to exit the water. He points to the low rock walls where the creek was diverted so that its bed could be worked. Lastly, he showed the foundations of a hotel with its two fireplaces.

RC

## KATH KNOWLES

Administrator of Bathurst Regional Council attended the last meeting of the Progress Association for the year. She announced that the Election date for the Council has been brought forward to 5<sup>th</sup> March.

Because there are no wards, there is concern "to people out here that we would be overlooked", Jim Shanahan commented, "Bathurst must look at the greater area and mustn't be city-centric."

Kath mentioned that the process of amalgamation will take a lot of time and a lot of consultation, with the emphasis on consultation.

Kath said that she had learnt from various village meetings of the local needs and there is a Village Infrastructure Project with funds set aside of \$ 200,000 to be shared around. Each Progress Association has to identify projects and apply for them.

It will be the representations that we make through our Progress Association that will determine the level of service we get from the Bathurst Regional Council.

RC

## NURSE'S REPORT

### Dr Wilson's next visit Tues. 11th Jan

The Clinic will operate over the Festive Season, except for Public Holidays. I take the opportunity to wish everyone a happy and safe Christmas.

A reminder that it is Summer, so keep the fluids up.

I have had discussions with the NSW Ambulance Service's Assistant Operations Manager, who is keen to support the community in re-establishing the First Responders program.

A meeting will be held in the New Year.

David Turcato

# THE STAMPER BATTERY CHRISTMAS (Dec 2004) EDITION

RC

## Community Bus

There will be no service on 30<sup>th</sup> Dec, the next due bus date, however the service will resume every second Thursday in the New Year. Bookings-via David Turcato on **63378263**.

## Women's Day

A Women's Day was organised this November. The women's health centre told the group of the medical, counselling and support services that the centre offers women. Discussed also were matters of self esteem and confidence issues, and dealing with depression. An introduction to yoga made everyone realise how unstretched they were.

The day finished with details of how to set up a community garden and permaculture, (anyone interested?).

Sheena Goodwin

## The End Cinema Society

### Upcoming films

Jan 9 – Death in Venice  
Feb 6- The Manchurian Candidate  
Mar 6- Sunset Boulevard

## SPORT

### Cricket

Hill End scored a win against Windeyer, ably assisted by Lachlan Willey and Craig Abbott, (EJ's cousin and Ted's grandson). It was touch and go for a while before those two got in, with only half the runs scored by Windeyer and that made for an exciting finish as our tally began to rise, slowly but surely. They took risks and that made it even more exciting.

---

## Golf

"The grass is growing and no one is mowing," Albert said, "and that's because we've had too much rain," Ian added.

Monsoon season at the Ranch.

RC

## Hill End Art

### Artists in Residence

There have been 18 this year, which means that both houses were occupied almost continuously.

Good for the arts, and good for the town.

RC

## Jean Bellette Retrospective

This is a retrospective of a major force in Australian painting from the 40s, 50s and 60s. Bathurst Regional Art Gallery, together with the S H Ervin Gallery in Sydney have put together a great show of 50 paintings.

Jean Bellette was married to Paul Heafliker and it was she who bequeathed a little cottage in Hill End to NPWS for artists-in-residence. That program, run by BRAG, has developed into a significant asset for Australian painting.

So it's appropriate for the exhibition to begin in Bathurst. Also, Bellette won the very first (Bathurst) Carillon City Festival Art Prize.

And the show? It's strong and it develops as the artist grows. Viewed in the context of its making, it is outstanding because it brought to Australian painting a new force. She put together her own style at Julian Ashton's in the 30s. Returning from

# THE STAMPER BATTERY

## CHRISTMAS (Dec 2004) EDITION

Europe, and remember every half decent painter simply had to go to

Europe, she helped to introduce Neo-Classicism.

There are Stoic Classic figures, standing heroically, staring out beyond the horizon. Her figures have the frieze-like character of Greek myths.

The psychological atmosphere of these paintings is very different from the still-lives, you generally associate with her name. Her fine draughtsmanship and her sense of composition combine to give her work a timelessness.

Missing from this show are works from her time on Majorca, which are much darker. Jean and Paul were introduced to Spain and that island, by John Olsen, who was a regular visitor to that little cottage at Hill End.

RC

### Acknowledgment

from the Curator's floor talk given by Christine France



Jean Bellette Betrothal of Achilles

### **Mullock Heap Magic**

Joann Linsdell's residency, mentioned in the previous Stamper Battery, culminated in her and the school children putting on an environmental visual experience.

Joann and the children had been exploring wax techniques and candle

making, and they spent several days at the chosen site, the eroded hillside

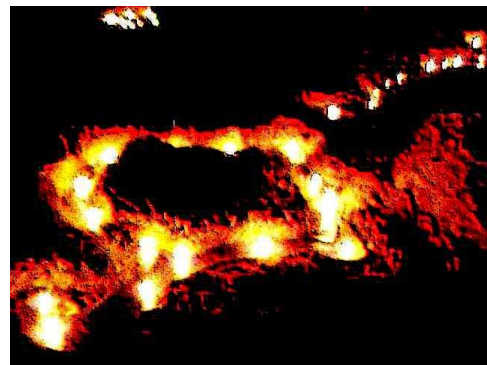
behind the cricket shed, pouring wax into eroded areas, and placing wicks into them, turning the clay hillside into a stream of candles. When lit at dusk this normally barren wasteland became a glowing wonderland.

Mullock heap magic indeed.

Joann would like to express her gratitude to the Cricket Club, and the P&C, along with Barrie Rogers, and Jill Groves for facilitating this event.

*Thanks to Joann herself, for bringing this artistic experience to the children.*

Editor





# THE STAMPER BATTERY

## CHRISTMAS (Dec 2004) EDITION

Mullock Heap Magic

Leader, concerning her Hill End portraits.

Editor

---

### Joann's Current BRAG Exhibition

Installations drawing inspiration from her interest in the environment and residencies at Hill End in 2001 and 2004.

Joanne was back for the Opening of her work at Bathurst Regional Art Gallery.

"It's about surface and the treatment of surface," she said. "It's a wet and dry thing. I like the contrasts of the slick surfaces of the sculptures, the wax and polished metal, against the thirsty, porous surfaces of the plaster and bisque fired ceramic. There is work in this show that was developed from my residency here. The starting point is nature, the nature of this area, the abundant blooming of the flowers here, the repetition in the shapes of the flowers, the many layers in the bushes, the geology.

I would start with a shape and develop it by applying layers of wax and then carving into it, that's how I work."

RC  
enti

Show runs until 16<sup>th</sup> Jan at BRAG

### Previous visitors Hill End articles

Both Zoe MacDonnell and Henrietta Manning have written articles relating to their Hill End residencies online, great to see our town's fame reaching an even wider audience.

Zoe's

[www.craftculture.org/archive/macdonnell1.htm](http://www.craftculture.org/archive/macdonnell1.htm)

Henrietta's

<http://www.artshub.com.au/ahau1/new/news.asp?Id=67607>

Henrietta also featured on the front page of Melbourne newspaper The

### Nov/Dec Resident Artists

#### Haeflingers Cottage

##### Clare Martin

Clare is a sculptor, she works with found objects, which she then relocates back into the environment.

"One of the things about Hill End is that the whole place has been 'museumised', it is a surreal experience." She said.

Clare made a rustic, delicate ladder from twigs, which she will photograph leaning in a hole in the wall at Chappell's Battery, the ladder meant to imply communication between two levels, and the suggestion of peering in.

RC

#### Murray's Cottage

##### Jen Webb

"It seems to me that artists are in some ways the canaries in the coal mine", she said in the talk she gave at BRAG on 'Art and Human Rights'.

"I'm ambivalent about the extent to which art can matter in the face of contemporary horrors and abuses—what differences can a painting or poem make in the face of all this?" she asked.

"Think of Picasso's 'Guernica', of which Jean-Paul Sartre suggested that it never 'won a single supporter for the Spanish cause.' So are artists the canaries in the coal mine? When everything is fine, they sing away," she said. "When things start going badly, they reflect this, they disappear or their work becomes tortured, intrusive, angry, unsettling."

# THE STAMPER BATTERY

## CHRISTMAS (Dec 2004) EDITION

RC

amplify public interest and tourism in the town itself.

Oliver Woodley

### The Nun's Picnic

Julie Ann Long returned with the crew of One Extra Dance Troupe. Who all dressed in Nun's Habits, gave two performances, one throughout the village, random performances by the group, and the other a 'vaudevillesque' show in the Hall that evening. It was well attended by locals and the many of One Extra's fans from Sydney. A dress rehearsal the previous evening was just as successful.

**Ronald Charles attended the second evening, and reported thus-**

The Town was alive with The Sound of Music. They stayed in three houses, Cooke's Cottage, Beryl and Gray's. The final dance number was a great finale when they came down into the audience. The fan dance earlier on was good too. I especially loved the Bolero. What was impressive was the quality of the dancing, so well synchronised. The speed of costume changes meant that it all sped past so quickly, that it was hard to remember each of the acts. I wish I had been to the dress rehearsal so I could have seen the show twice. It was really good fun, but over before it started. It had impact, was fast and furious, was humorous and sometimes a bit sarcastic.

RC

### HETPA On-line

With the new web site for the progress association nearing completion, members can soon look forward to an on-line archive of all past Stamper Batterys as well as an informative display of Hill End. The web site will be a chance, to not only increase HETPA memberships, but also to

---

### Summer Solstice

11.42am 21<sup>st</sup> December



Another year draws to a close, and I would like to thank all contributors to The Stamper Battery this year. Contributed articles, photos, etc. concerning Hill End are always welcome.

Glenn Woodley  
Editor

[heaps@ix.net.au](mailto:heaps@ix.net.au)



---

Seasons Greetings from

THE NEWSLETTER OF  
THE HILL END & TAMBAROORA PROGRESS ASSOCIATION

# **THE STAMPER BATTERY CHRISTMAS (Dec 2004) EDITION**

**The Stamper Battery**