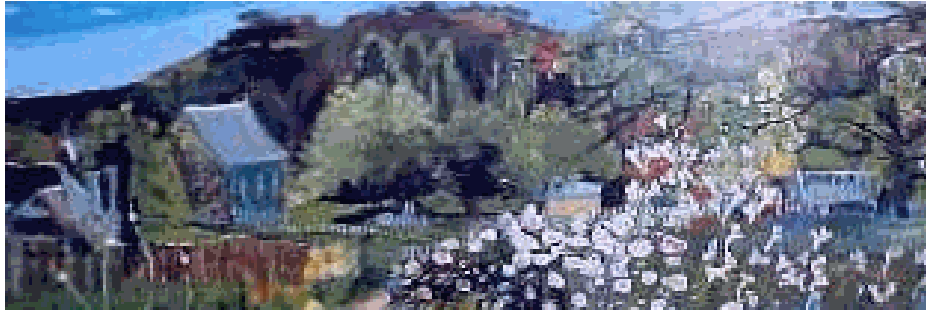


THE STAMPER BATTERY

SPRING ISSUE (October 2004)



'Home' by Gria Shead

HETPA President's Report

Firstly, I would like to thank the many people associated with the Progress Association for their effort and support throughout the year, which is of course voluntary. Congratulations to the "Friends of Craigmoor" for yet another successful open day recently.

We now have 115 members, which isn't bad for a township of 120. A Canberra writer joined just for the Stamper Battery, as many non-residents have done.

Kath Knowles, Administrator of Bathurst Regional Council will be attending the next Progress Meeting on Nov 16th. Kath wants to tell us where BRC is at, basically it's going to be a question and answer session for the Community. It is good of her to come up and I encourage everyone to attend and raise any issues, which may be answered on the night.

I have a suspicion that there will be additional sealing on the Bathurst Road, just above Cole's Bridge. Big machinery is working there and it seems the long black road approaches.

Progress is considering approaching the Parks Service, following the success of Craigmoor, to do something similar with Beyer's Cottage to open it up on special days.

The Helipad is on track and we are waiting for drier weather to get started.

The Progress Association recently donated \$100 towards the restoration of the Blitz; Robert, Jim and the brigade volunteers have done an amazing job bringing this piece of important Hill End History back to life.

The Dept of Corrective Services program has progressed up to 'Alana' and will be coming into town soon, cleaning up the Avenue. It is a program that continues to benefit the Community, without taking work from people and the various projects will be an ongoing commitment for at least two years.

As this will be the last newsletter for the year, on behalf of the Progress Association I extend our warmest Christmas greetings and wish everyone a safe and prosperous New Year. Next and also last Progress Meeting for the year 16th Nov at the Royal Hall 6.30pm (refreshments to follow).

HETPA President

Barrie Rogers

THE STAMPER BATTERY

SPRING ISSUE (October 2004)

Park Life

The Hill End horse drawn hearse will be back on long-term loan from the National Museum in early November. Built by Thomas Ackland c1870 the hearse was in use until motorised vehicles took over in 1925. It will be on display at the Visitors Centre.

The Cobb & Co Coach was brought to town from the Visitors' Centre and placed in Bill Lyle reserve until it's new home at Lyle's Cottage shed was completed where it will be on permanent public display. Also, two sulkies have been put in the stables at Craigmoor for viewing.

Photographer and camera curator Brett Hilder has completed the early camera collection display at the visitor's centre and will be working on updating the Photograph Wall and panorama's over the coming months.

NPWS are also looking into the possibility of bringing a selection of the Holtermann Collection to Hill End for a limited exhibition.

Glendora Campground re-opened in October; it was closed for winter due to poor visitation with only four campers in a three-month period it will be closed annually for winter.

Weed spraying will be carried out on 1- 5 November. It will be targeting blackberries and other noxious weeds in the gullies behind Rose Cottage. Also Patterson's Curse up near Denman's, serrated tussock near Bald Hill Mine, and St John's Wort in a few places.

The Hill End Masterplan is currently with the Minister for the Environment. It is expected that the endorsed plan

will be presented to the Community at an appropriate time early next year.

Pine Tree Eradication. The Parks Service will be sending crews to selected locations around the village, crews from Bathurst, Parkes, Forbes and of course Hill End, will be removing Radiata pine trees only in the area behind the General Store from Fletcher Lane to the village camping ground on November the 11th

Unoccupied town buildings

Following several requests from the community, Parks have produced the following list of unoccupied buildings and their status.

Assay Cottage/Mining Registry:

The building has been leased to Jan & Peter Gallen for use as a static goldmining display and overnight accommodation. Scheduled to open Nov.2004.

Bleak House:

Work will commence on the house in preparation for its occupancy under the Residential Tenancies Act, the house is to advertised for lease in December 2004.

Bryant's Butcher Shop:

The National Art School has received funding for this year to construct kitchen and amenities and is preparing a tender package. On completion, by the end of this financial year the building will be used regularly as an Artist in Residence program.

THE STAMPER BATTERY

SPRING ISSUE (October 2004)

CWA Building:

NPWS are in discussions with Mid Western Health about relocating the clinic to the CWA. Privacy screening and soundproofing of partition walls will need to be done before relocation. It is feasible they could move by 30th March 2005.

Denman's Cottage:

NPWS have been allocated \$50,000 in maintenance funding for stone wall stabilisation and reconstruction. Tenders packages are currently being prepared.

English Group:

A commercial/conservation lease is being negotiated with the successful tenderer Mr Bill Moseley. Work is due to commence in December and upon completion the building will be permanently occupied.

Lyle's Cottage:

Clean up work is under way, the building will be assessed for cost of restoration and type of occupancy the evaluation is due for completion Jun 05, a possible relocation of the Visitors Centre Administration is being looked at.

The Pines:

A Commercial/Conservation lease is being negotiated with the successful tenderer, work will commence immediately following signing of the lease. The building will be permanently occupied on completion.

Ross McDonnell
A/Regional Manager

Betty Maris

Long term local resident and artist, Betty, was kind enough to offer some images of her paintings that have proved so popular over the years amongst passing tourists. It is a great pleasure to present examples of an artist's work that has portrayed Hill End for decades. Below, some of her German Town works.



Heap's Cottage



Ackermann's Cottage

With thanks to Betty, once again for her most welcome input.

Artists, writers, poets, anybody wishing to contribute articles, images, etc with a local feel, please contact editor heaps@ix.net.au /63378384.

THE STAMPER BATTERY

SPRING ISSUE



Snowstorm October 1872 Clarke St

October 2004 certainly seems more spring like than it must have done 132 years ago.

19th October

Slipped by rather casually perhaps this year in Hill End, however 132 years ago, the day passed far less quietly. For it was on this day, in 1872, that The Star of Hope Mine on Hawkins Hill, produced the famed Beyers Holtermann Specimen. The largest ever, single specimen of gold, quartz and rock, removed in one piece, containing possibly 3,000 ounces of gold. A bountiful October here in 1872.

The previous photo seems to cast doubt on the old concept that Holtermann posed in absentia with the specimen superimposed later, for the more renowned image. However here is Holtermann clearly beside the freshly removed wonder. It seems more likely that the posed photo concept was for the advertisement for his 'life drops' he later marketed, well after the Specimen was crushed.



Holtermann and crew next to specimen



Holtermann Specimen image from Life Drops lable

THE STAMPER BATTERY

SPRING ISSUE

First Local Inhabitants

The Turon valley area was once the domain of the Bularidee clan of the Wiradjuri people. Early white pioneers described the Bularidee people as “physically fine specimens, enjoying a plentiful supply of river fish and rock wallaby.”

Unlike other Wiradjuri, who by the 1820’s, were feeling the impact of white expansion with martial law being declared upon them, the Bularidee were isolated enough in their remote rugged valley to evidence no real threat of European encroachment until the gold rush era of the 1850’s.

Hints of their past presence, such as stone axes, toolmaking sites, grind marks, and middens are still found today in the Granites and along the Macquarie valley, known to the Bularidee as Wambool (meandering).

Rock art is not evident in the area, however many exquisitely carved burial trees once used to stand throughout the area, but time, the elements and varying attitudes have not been kind to their preservation.

The Bularidee however did not disappear completely after the gold rush. Reports in 1929 from a local prickly pear eradicator, mentions an Aboriginal camp atop Kitty’s Falls, located there because of its proximity to abundant yams thereabouts.

With thanks to Brian Hodge’s

“ The Macquarie” 1985

Spring Open Day

Sunday 24th October.

The day was its usual success with over a hundred [101, in fact] registering to go through the nine houses open for tour. The effort put into publicity was well rewarded. “With our last visitors, the hail came down”, said Betty Jeffree, of Rose Cottage, “we were very lucky, any earlier, and it would have spoilt the day.”

The Progress Association wishes to thank all those who opened their houses and also thank all the volunteers involved, including the staff from BRAG.

RC



Haeflinger's Cottage

Progress also acknowledges both websites,
www.artsconnect.com.au
www.hillendart.com
for kindly featuring a web page on this Spring Open Day.

THE STAMPER BATTERY

SPRING ISSUE

life, building houses”, so he is well equipped in this venture. He has

Hosie’s Store

Sue believes that we should tap into the Mudgee market more, what with the sealing of the road, the creeping of the wineries towards us, the Rattray’s berry farm and the Food Trail. She further tells us that the Editor of the Canberra Times gave Hill End a good write-up.

RC

Tourist Hits Gold

A lucky tourist recently found two nuggets, thought to be between ½ oz and 1oz each in the panning area. A student on one of the Ranch’s excursions found a specimen of quartz with three small pieces of gold in it.

RC

The Rattray’s

Got a small grant from Council to help restore the wattle and daub cottage on their property, which may become part of their Berry Empire.

RC

Bernie Baker and the Motel

No longer a mystery. Work will be starting soon. Bernie’s aim is keep visitors here longer and he will be targeting group accommodation at a different level to the Ranch. “It will fit in between the Hotel and the B&Bs,” he said.

He knows his way around the Bus Industry and knows the level of service required. Bernie’s background includes 22 years in bus tours, all around Australia, and “in a previous

already lined up locals to do some of the work, he said, “much of the work, will however, require specialist contractors, such as the erection of panels for the walls and ceilings. The plans reveal an entry outside the village, at the cutting, a buffer zone of trees along the Bathurst Road and, importantly, a waste water recycling plant.

There are six buildings of four motel rooms and a large restaurant, all low key in their design, similar to the three houses, already on the site.

Through his contacts in the Bus Industry, he will be aiming to attract Adult Tours.

RC

The Ranch

“It is going along just fine,” Kerri said, “we have in mind a lot of improvements and new infrastructure, including a ninth hole on the golf course.”

“I’m sick of an eight hole golf course,” Ian added, “let’s hope the Mongrels can count to nine.”

“It will be playable in a month”, Albert said.

“We will be getting three new railway carriages, including two 1908 wooden ones”, Ian said.

THE STAMPER BATTERY

SPRING ISSUE

RC

The General Store

The weekend news is fresh with Sunday papers on Sunday, with extra copies. There is a new Italian brand of coffee, more fresh produce, fruit and vegetables and more brand items. "I am catering to the needs of diabetics and those with specific problems," Dee said, "we opened the restaurant on the long weekend with a set menu and it went well, also we have extended our hours when there is the demand. Our team is in place now and we are all working well together, even down to the lawn-mower boy, Casey."

RC

Phil Davie's Birthday

Please don't tell him that he had one, but happily for him, his daughter and son-in-law came up. And a little boy, who was learning to play pool from his grandfather.

First time I'd ever seen Phil play pool, well, that's what grandfathers are for. They were up for his 70th Birthday, we hope that they spend more time here.

We would never admit it, but we all love Phil, we all respect the work that he does and, amazingly, he does it with only a couple of measurements. How does he do it?

Enough, enough!! He'll hate it. That's him.

RC

Eddie's New Car = SILENCE

No more 7am or Pub closing alarms as "Leadfoot" hurtles through Town to the Ranch or from the Pub. The car has air-conditioning, so he won't know summer.

RC

John Carter & Karin Chin

Both have been really sick and we wish them a speedy return to Hill End. Both repaired well.

RC

Concorde and Liz Cheetham Depart

They have moved beyond Perthville, into a huge house with four bedrooms, but we'll still be seeing them around the town.

RC

Pattie and Noel Gainsford

Will also be departing soon for a new life in Tambar Springs, near Coonabarabran, where they have bought a house. We wish them well.

RC

Carol Auld

Has resumed her knitting business. She has set up in Alpha Road, using computerised machines [what isn't nowadays?] she can knit almost anything and she is certainly prepared to have a go. From baby wear to blankets, from jumpers to hats, from cardigans to scarves. "Electricity would help", she said.

RC

Avon Lady

Waunita Chatfield is your supplier
63378284

RC

Nick Rigby

Sends his regards, Barrie tells us, "Hill End is still in his thoughts despite the ocean between us. It sounds like a nice place to work. Interestingly, he is trialing a sea water turbine to generate electricity, using the action of the tide."

RC

THE STAMPER BATTERY

SPRING ISSUE

Nurse's Report

“Encourage your kids to take care of their teeth,” David said. “What prompts me is that quite a few adults have presented to the Clinic with tooth abscesses which are commonly caused by tooth decay and cracked enamel. Maintaining good dental hygiene and having regular check-ups with the dentist in early life help prevent the formation of serious dental problems in later life.

“Adults get enough fluoride out of their toothpaste, but children may need more. Given that the water of Hill End is not fluoridated, you might discuss with your dentist the benefits of adding fluoride to the drinking water. Decay is prevented by regular brushing and by reducing sugar intake, as in sweets. The free Dental Clinic for children is based at Bathurst Public School in Rocket Street 6331 6126, where there are x-ray machines.”

So, make your kids brush their teeth to avoid dentures.

DR WILSON 9th NOVEMBER

WOMEN'S DAY

Tuesday 16 November, 10am to 3pm, byo lunch, morning and afternoon tea provided.

Kathy Cowley from the Bathurst Women's Health Centre will discuss Health issues and Margaret Shearer, a Counsellor will talk about depression. A yoga teacher will give an introduction to yoga and she has a video we may be able to use in ongoing classes. A permaculture workshop will also be held.

Police Report

Hosie's B&B was broken into on 22nd Oct, the Great Western on 29th and cash was stolen from both.

A property on the Bridal Track was broken into on 20th October and, likewise a small amount of property was stolen.

A 40 year-old Sydney man was caught shooting on the Alpha Road and was charged, and his firearms seized. He will attend Bathurst Court later this year.

“A reminder not to shoot in public places,” Jim said. “Also remind people of their responsibility for the safe storage of firearms. And, as was seen recently, loose talk about guns brought a very strong response.”

A green Mazda was stolen from a property at Dougherty's Junction on 22nd October and anyone with information can contact Jim anonymously.

He also issued a reminder about unlicensed drivers and unregistered cars.

On a more pleasant note, Jim is involved in arranging for the use of the PCYC bus, to give local teenagers access to Blue Light events in Mudgee and Bathurst.

Golf

The Mongrel's Open was held to inaugurate the new Clubhouse: 18 holes with a barbeque in between. Bernie Baker [Loaf] won and Carla [Scenic] won the Women's “and she deserved to”, Albert said, “seeing that she was the only women there”. Ron Guinness [Basil] ran last, “which is

THE STAMPER BATTERY

SPRING ISSUE

unfair”, Albert added, “since he started the Golf Course”.

As well as facials, Cassie Lea 63378315 and 317. I had a massage

Pony Club

Glynis tells us that she has been negotiating with the new Bathurst Regional Council for the lease on the Racecourse. To get it up to their standard, there will need to be a working bee. She says that they need more financial members to make it viable, there are 8 kids interested, also, they are still looking for quiet ponies for the younger members.

RC

THE END FILM CLUB

SUN 7th Nov at 7.30

William Wilder’s ‘**THE LETTER**’
Based on Somerset Maugham’s play, a 1940’s gripping murder thriller, starring Bette Davis and Herbert Marshall.

Mail Musings

It can take up to five days for a letter from Hill End to reach an address in Sydney. It should be three according to Mudgee Post Office. Their mail leaves at 3.30, so ours misses out that day.

Now, back in the 1870s, it was a 24-hour service. The coach from Hill End took it into the train at Rydal, (which once was the biggest station outside the metropolitan area), the train took it to Sydney and it was delivered the next day. Best get email.

Massage

once I had finished typing for newsletter to get rid of kangaroo shoulders. Cassie-Lea is very strong, but not cruel. She loosened many a knot.

RC

HILL END GOLD LIMITED

Robert Anderson, the Mine Manager, tells us that the mine has been on stand-by while the Directors have raised more funds. “They have been successful in raising some money and funds have been allocated for work to resume almost immediately,” he said. There was massive storm damage to the road following the hailstorm recently and Robert has been busy fixing it.

RC

The Community Bus

A plea for more passengers folks, well frequented by a select few, this service is most valid and essential in our isolated community.

Please take advantage of this service, so we do not lose it, through lack of interest.

Every 2nd Thur, 9am

Bookings via David at Clinic.

Library Van

THE STAMPER BATTERY

SPRING ISSUE

8th Dec.2-3pm at School
Last visit for 2004

to John Carter for donating first prize
and Kmart Orange and Retravision
Bathurst for their support

HILL END VOLUNTARY BUSHFIRE BRIGADE

Blitz Restoration

The restoration of the old Ford Blitz commenced with a working bee to remove any items that could be damaged during the sandblasting. During this process several layers of paint had to be removed, including an Air Force green. Also uncovered were the letters RAAF on the sides of the water tank. This indicates that the Blitz was at one time used as an RAAF Fire Tender. After sandblasting the Blitz was undercoated to seal the metal to prevent rusting.



The next step for the vehicle body will be to paint it in its original Bushfire colour; a sample was saved before blasting and will be matched as close as possible. Mechanical work will also be undertaken as and when finances permit.

Thank You

Speaking of finances thankyou to all those people, especially patrons of the Royal Hotel who bought so many tickets in our recent "Blitz Restoration Raffle". Thankyou to Richard and Sarah George for allowing us to run the raffle in their hotel. Also thankyou

First Prize: Mikali Shanahan
Second Prize; Heather Broadhead
Third Prize: Maxine Anderson

Permit Period

Its that time of year again, you will need a permit to light a fire in the open (camp fires excluded). With the warmer weather approaching please be careful. If you would like a permit please contact Brigade Captain Robert Anderson on **63378275**.

Be Prepared

Now is the time to start cleaning up around your house, get rid of any piles of rubbish, clean gutters of leaves and make sure you have a reliable water supply ready.

Christmas Hamper

Our next fundraising will be an Old Fashioned Christmas Hamper raffle with tickets (\$2.00 each) on sale from mid November; all proceeds will go to the Blitz Restoration Fund.

Membership

As always we are seeking new and renewing members, if you would like to join please see Brigade Sec/Treasurer Maxine Anderson. You do not have to live in Hill End to be a member; many people show their support by joining as a non-active

THE STAMPER BATTERY

SPRING ISSUE

member. Fees are \$20.00 or \$10.00 concession.

Jim Shanahan
President/Deputy Captain

SCHOOL NEWS

Excursion

Term 4 will be busy this year with students and teachers returning from their major excursion to Burrendong Recreation Camp during the third week. Students and teachers spent 4 days at Burrendong where they participated in a range of activities and had the opportunity to mix and make friends with students from other schools.

As always it was a great experience for everyone especially as all students were able to attend this year.

Pre School to Kindergarten Transition Program

The program continues with Mrs Horan during Term 4 with younger children getting accustomed to school life. All the older students enjoy helping these new children whether they are siblings or not.

Presentation Night

Students are already rehearsing for the end of year play with Mrs Groves for presentation night that will be held on Friday 10th December. As usual the children are sworn to secrecy concerning the content of the play. We all look forward eagerly to see the show which is always the highlight of Hill End's end of year celebrations.

Aluminium Cans

Hill End Public School continues to collect aluminium cans so if you need to dispose of any please leave them at the school.

Gaye Shanahan
Hill End Public School

Art at School

Henrietta Manning



Henrietta was perhaps our most prolific of visiting artists yet seen here. She planned to paint as many local portraits as possible during her residency, a task in itself just to find enough willing sitters. She actually completed over 50 portraits of locals, quite a percentage of town.

Henrietta also held a workshop at the School, (supported by Regional Arts NSW Country Arts Support Scheme), she worked closely with the children of the Public School, not only portraying them, but getting the students to paint their own self portraits on the traced outlines of their shadows. The students then exhibited their work at the Catholic Church, towards the end of Henrietta's residency. It was a

THE STAMPER BATTERY

SPRING ISSUE

fascinating concept and show, seeing the different manners of self-expression the children used.

A most creative and indeed, edificial project for the students of our school.



Some of Henrietta's school student portraits and the students shadow self portraits

Henrietta comes from the Dandenongs in Victoria, in, but is originally from England.

"I came here about 15 years ago. We spent about an hour and a half and I never forgot it.

There was a competition in Sydney, called "BLUE BOY", after the painting by Gainsborough. I did a painting of myself as the Blue Boy, dressed in blue denim, in the same pose as the Blue Boy, but the scene I put myself in was a landscape based on the on the Hill End photos I took when I was there for 1½ hours.

So I was determined to come back some time. And then I saw the advertisement for the residency last year. I didn't get it then, but this year, I did.

And, even though I love the landscape, I wanted to portray Hill End, through the people who choose to make it home, and it was a continuation of another series I did, based on two Housing Commission Blocks in Melbourne, where people were socially and physically isolated, even though

they were in the heart of the city. So even though Hill End is isolated

geographically, people live here by choice and that's what fascinates me.

They have a strong sense of community, and what I have learnt is, that you are far from isolated here, particularly when I worked at the school, which is very unique.

Thank you very much to every body, and like all the other artists, I've had a fantastic time."

THE STAMPER BATTERY

SPRING ISSUE



Some of Henrietta's local portraits

Hall for a contemporary vaudeville show. Directed by Julie-Anne Long. **Performers wanted** – anyone interested in participating in this event are required on the day! No experience necessary.

For more information please contact Oneextra (02) 9698 6866 or

www.oneextra.org.au



Nuns in the landscape

Julie Anne Long

Julie-Anne returned for another residency, and has lost none of her enthusiasm. She came up “to develop a concept based around Jeffrey Smart’s painting ‘The Nun’s Picnic’ which has the Catholic Church in the background. Basically, I’m here because BRAG asked me back for another residency. It is linked to a performance here on Sat Dec 4th. When I spent time here last, I thought that people come here are inspired by their experience here and take it away and develop it elsewhere. I wanted to complete the circle by developing the work here. The show here on December 4th will be the cumulation of this residency and the previous one.

The Nun's Picnic

Sat 4 Dec 2004 2pm - 5pm in and around the village, then 8pm in the

Joanne Linsdell

Was last here three years ago, when she did an installation in the Catholic Church with the kids from the school. This time, she is going to do “Mullock Heap Magic”, again with the school. It will be held on Fri night, 5th Dec, with a BBQ beforehand at 6.30, starting as it gets dark around 7.30 at the Cricket Club.

In the erosion gully behind the Cricket Shed, she is going to create a river of wax in different colours with lots of wicks. “It should be safe from the wind, if there is one and the Fire Truck will be there just in case”, she said, “and if it rains, we are able to use the Royal Hall. Sounds strange? Ask the parents who were at the Old Catholic Church three years ago. That was magical. There is work to be done to prepare the site : Monday 1st and

THE STAMPER BATTERY

SPRING ISSUE

Wednesday 3rd 2pm to 4pm. Bring shovels and gas camping stoves.

This community arts project has been made possible by the Commonwealth Government's regional arts program, the Regional Arts Fund, which gives all Australians, wherever they live, better access to opportunities to practice and experience the arts.

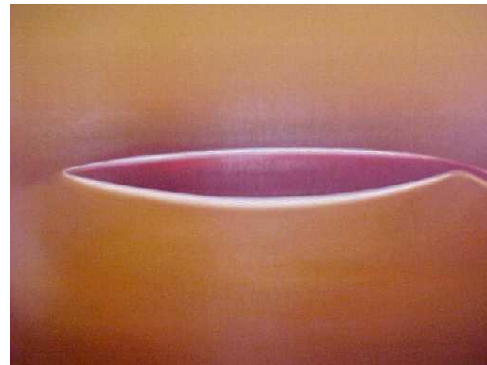


Catholic Church Candle Installation

Gabrielle Courtenay

“It’s the quality of the light here that I like”, Gabrielle said, “and the air. Any walk in any direction, you see the remains of where someone has dug. It’s almost primitive, like the earth mounds of fortified villages. Because of the light, the leaves of the gumtrees seem to glow and with the red of the earth, the palette of my painting has changed.”

Gabrielle explores an abstraction that seeks both the spiritual and sensual. She employs colour’s capacity to express emotion, reducing form to simple, sensual lines, yet creating a tension in her work, steering clear of total harmony by introducing linear shadow. A keyhole glimpse of mystery.



Gabrielle Courtenay

Exhibitions

Artful Mining

Bathurst Regional Art Gallery

22 Oct until 5 Dec

Featuring ten artists from the residency program since 2003, including Annette Iggulden, Catherine Rogers, Judy Barrass, Margaret Roberts, Rachel Fairfax, Rosemary Valadon, Zoe

MacDonell and The Nun's Picnic Project Team: Julie-Anne Long, Sam James and Heidrun Lohr. This exhibition is accompanied by an online catalogue of sorts. Interested people can check it out at

www.hillendart.com/artful

Jean Bellette Retrospective

Bathurst Regional Art Gallery

Thur 9 Dec until 23 Jan 2005

This is the first survey exhibition of work by Jean Bellette and will feature over 50 works.

A Bathurst Regional Art Gallery exhibition in partnership with S.H.Ervin Gallery, Sydney.

THE STAMPER BATTERY

SPRING ISSUE

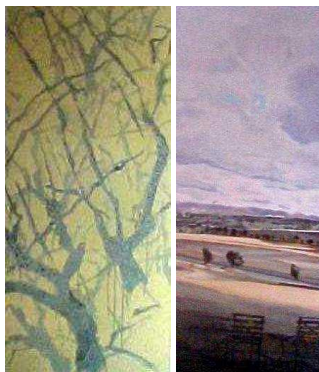


Jean Bellette

Janet Haslett and Julie Williams

Borderland Exhibition

Janet and Julie presented a collaborative show based around Henry Lawson's and Banjo Patterson's differing perspectives of the bush, at Lawson Hill Estate, Mudgee, directly above the remnant chimney of Henry Lawson's old house, this sunset viewing was indeed an atmospheric experience. Show runs till Nov7.



Julie & Janet 'Borderland'

Brett Hilder

Brett also has a show of photographs in Mudgee at the Butcher Shop Café. His opening night (Monday 18th Oct) was well attended by various Hill Enders.



Brett Hilder

New Resident Artists

Dr Jen Webb

Murray's Cottage

12 November - 10 December

Dr Jen Webb is a writer on art and creative practice. Currently researching the relationships between art and human rights, here to produce a manuscript for later publication.

Clare Martin

Haefligers' Cottage

November 15 - 24 December

Clare Martin is an installation artist. She plans to erect ephemeral works in historic building's grounds.

Late News

Cricket

Gold Country Cup

21st Nov vs Hargraves away

5th Dec vs Windeyer home

19th Dec vs Sofala home

Gumnuts

Gumnuts continue to come out once a fortnight. "The children are loving playing in all the organised activities with all the exciting equipment," Lee Rodgers also added, "So, Mums come along and support the Galloping Gumnuts by bringing your children." Lee would also like to extend an open invitation to the community to join the Gumnuts Christmas Party and sausage

THE STAMPER BATTERY

SPRING ISSUE

sizzle on 7th Dec, at 11am in Lyle Park.

Come along and see what Gumnuts is all about.

40 KM THROUGH TOWN

“There are more small kids now” said Gaye Shanahan, “and big Tour Buses flying through, people ought to slow down their driving.”

More Pines

As Bob Fraser of the Common Trust, said in support of the planned pine removal, “this new growth would not be a problem if we still had the cows here.” Well said Bob, anyone tried to walk along the gullies lately, bit choked with bush growth too.

A New Creeping Threat:

No, not snakes nor the encroaching pines, but the slow spread of large aluminium sheds around town, another new threat to our unique village charm?



The Kangaroo, Part Two:

Now the warmer weather is here, it is nice to see the local kangaroo mobs feeding with their baby joeys in the long, Spring grass. However, it leads to questions regarding the nature of the kangaroo eye disease which was first reported in 1995, and then witnessed here in Hill End following the drought. This year’s Bathurst race showed that the problem is still afoot, with a

kangaroo blindly making its way onto the Mt Panorama course mid-race.

So – is the phenomenon simply a nasty eye disease or something worse? Can the disease be passed on to domestic livestock, or even to humans? Is it a new disease, or has it existed before? These and other questions inspired a collaboration, between agricultural, veterinary, health and wildlife agencies on a scale never seen before in Australia. Finally, at the Australian Animal Health Laboratories in Geelong, researchers identified two viruses using genetic-typing techniques developed by Australia’s molecular biologists. These biologists were able to test a slide of tissue taken about 20 years previously from a kangaroo with similar symptoms. Kangaroo blindness, as it turned out, was not a new disease. And when the AAHL research team tested insects taken from areas where the disease was rife, the viruses turned up predominantly in two species of small sandflies.

With researchers given a liable candidate carrier for the disease, veterinarians screening kangaroo populations found that although most kangaroos in areas of disease showed signs of exposure to the virus, only a small percent went on to develop blindness. As well as this although sheep and cattle showed signs of exposure to the virus, they did not become blind. And thankfully, no effect of the virus has ever been detected in humans.

 – National Wildlife Federation
International Wildlife Magazine

THE STAMPER BATTERY

SPRING ISSUE

DID YOU KNOW:

When Australia's first European explorers saw a strange animal nearly as tall as a human, leaping around like giant rabbits they couldn't believe their eyes! They asked Australia's original inhabitants, "What are these animals?". The Aboriginals replied "Kangaroo", meaning "I don't understand you". The Europeans thought they were referring to the big-footed hoppers, thus naming them 'Kangaroos'.

Oliver Woodley



Stamper Battery