

The Stamper Battery

October 2007 issue



Stained Glass Window from demolished Holtermann tower, Sydney

October 19th 1872

Holtermann Specimen found

The 135th anniversary of the famous find at the Star of Hope mine past by this year in Hill End. Perhaps the single most important date in Hill End's history.

Hill End is indeed a Tonic

Hill End is a peaceful respite and rejuvenator for many visitors. Now it truly is a tonic. A company is producing a beverage named Hill End Herbal Tonic.



From www.norfolkpunch.com.au

“Following the discovery of reef gold in the late 1800's, prospectors and families came from all over the world to try and make their fortune. Many European settlers brought with them recipes for herbal tonics and the seeds necessary.

Hill End is a classic example of where the legacy of such plantings is still to be seen in the many hawthorn trees around the town. Hawthorn was considered to reduce fevers and assist in cardiac complaints.”

The Stamper Battery

October 2007 issue

Hill End & Tambaroora Gathering Family Story Award

In conjunction with the family History Expo in April next year, the Hill End & Tambaroora Gathering Group is holding a family story competition. The intention of this award is to honour our ancestors by recording their lives, mixing recordable facts with maybe a little bit of fiction/faction, in a way that brings them to life.

Now is the time to put that family research to good use. The prize will be awarded to the best prose article incorporating verifiable biographical data about a Hill End or Tambaroora personality or family.

Entries should be based on fact as much as possible, to a maximum of 2000 words

All entries **MUST** be accompanied by the official entry form which can be obtained from Lorraine on (02) 95870352 or heatgg@yahoo.com.au

Entry forms are also available from Daphne at Hill End Family History Research Room at the Museum.

An anonymous benefactor has donated \$100 towards the prizes so it will be worth your while to put pen (or computer) to paper!

The closing date is 31st January 2008 so start thinking about what you will write.

Lorraine Purcell
Convener
Hill End & Tambaroora Gathering Group

<http://www.heatgg.org>

Hill End Family History

There have been a lot of visitors about town and a lot of them have found their way into my little "office" at the Visitor's Centre. Some of these people came into to find their ancestors. Thanks go to Lorraine Purcell for the fantastic job she is doing in arranging the Family History Expo next year. There will be a lot of people coming and I expect everyone to have a great time while they are here. This means that the participating businesses will do well also.

Daphne Shead

www.hillendfamilyhistory.com/

Vanished Local Mansion Identified Perhaps?



Readers may remember from a past issue an article on this mystery building in the background of a Beaufoy image, a large edifice that once stood above Warry's Rd, between Sargents Hill and Bald Hill. By coincidence I came across this article on the web- *'It was in Hill End that the great coaching empire, Cobb & Co. had its headquarters and James Rutherford, the man in charge had a grand mansion from where he directed the operations. In distances travelled Cobb & Co. in Australia, out rivalled Wells Fargo of the USA'.*

Ed.

From www.gold-net.com.au

The Stamper Battery

October 2007 issue

NSW Heritage Awards for Hill End 2007

Thanks to the nominations by Cheryl Welsh, Hill End received two Heritage Awards this year.

Daphne Shead received the award for Cultural Heritage, for her dedicated family history research.

The Friends of Craigmoor were also awarded the Built Heritage award for their voluntary work making Craigmoor available for public display.

A Visitors musings on St Paul's



'What was my first impression when I saw the church? "Fading Glory" was the phrase that came into my head.

Looking through the camera lens, I saw something ancient. I had a tinge of sadness and felt sombre.

The interior of the hall was still in its original Scottish-style setting. I could even smell the old hymn books inside the building.

I don't know what kind of spiritual impact this church has in Hill End now. Standing before it, I felt the building was merely a religious symbol of the past with no relevance to us today'.

From <http://www.farcountry.info/Devotions/>

New books about Hill End

Jill Jones' latest book 'Fold Unfold', (2005), is a book of poems collaborating with photographer Annette Willis using Hill End images.



From www.papertigermedia.com

Eustace- A Ghost Story

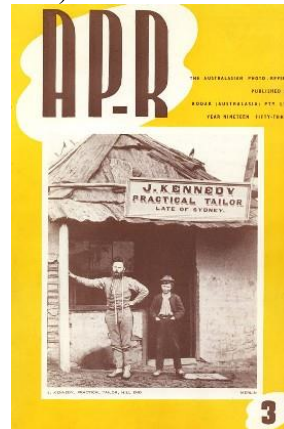
An extract from children's book by Catherine Jinks

'I went on a school excursion to Hill End, and found myself investigating, was the ghost of Granny Evans really pacing around the museum? Was the ghost of Eustace Harrow really smashing things in Taylor's Cottage? What about that creepy old miner hiding out in Golden Gully?'

From <http://www.panmacmillan.com.au>

Old books about Hill End

Keast Burke-photographer, editor of Australian Photo-Review-'Gold and Silver' (1953)



Cover of 1953 Australian photographic magazine

The Stamper Battery

October 2007 issue

A most photographed view



Hill End from the Royal Hotel New South Wales,
December 1956
Russell Drysdale

A gift of Lady Drysdale, 1982 to
National Gallery Victoria.

Possibly one of the most photographed
views of any Australian town.

Hill End in photos

A quick image search on the web has
more and more Hill End images each
week. Several photographic sites have
sections devoted to Hill End. A few such
examples follow-



Dawn Splash Out
[http:// planeimages.smugmug.com](http://planeimages.smugmug.com)



www.pbase.com

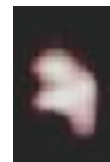
A most photographed local



'Nothing like an "old" on an autumn day'
[http:// planeimages.smugmug.com/gallery](http://planeimages.smugmug.com/gallery)

From the sublime to the ridiculous?

*'1/2 century ago, someone's
grandfather saw a cocoon shaped craft
in a valley on the Bridle Track. Close by
a blue iridescent humanoid collected soil
samples'.*



Alleged UFO photo above Turon 2001
From www.ufosociety.com.au

The Stamper Battery

October 2007 issue

Heritage Conference at the Lodge



hillendlodge@bigpond.com.au

About 50 people assembled for The Central West Heritage Network Seminar. It was the first conference hosted by the Lodge. They came from far and wide to learn about Hill End, a good example of heritage in action. For a background to the place, Coordinator, Wendy Carlson introduced Norm Mann, then Mayor, Lew Bezzina of Parks, Gavin Wilson and Ray Christison, who did the Conservation Strategies. NSW Heritage Office's Miriam Stacy talked of the grants process and the technical resources of the Heritage Office.

www.cwhn.org

Bathurst Council's Barbara Hickson speaking on cultural tourism remarked that getting to Hill End in 1872, "Was a hell of a journey. Cobb and Co had the biggest, fastest coaches. They introduced a fifth horse as a leader, they improved the coaches for comfort and made more stops to renew horses, hence so many pubs sprung up along the way". She also told us of a brochure she is preparing on the Chinese history of the region. In Hill End there were 80 buried in the Chinese cemetery, yet nothing remains today. The bones were disinterred and sent back to their families in China.

At the end of an intense day, we all retired to the Royal Hotel to observe some living heritage.

Ronald Charles



"We all retired to the Royal Hotel"

Local Roads

The Mudgee Rd has been sealed back from Hargraves to the bad corner. The Bathurst Rd will be done in part before Christmas. One bad bend has already been taken out and 3 culverts put in place. Roads within the village will be sealed at the same time.

Ronald Charles

The Assay Cottage

Jann Gallen have closed her business, 'Prints and Images' opposite the P.O. The closure was necessary as they were unable to secure their lease without joining in the current round of applications. They were required to vacate, apply and if successful, reoccupy. They will not be bothering to submit to the process. We now have yet another empty shop as well as the CWA. This has a negative affect on tourist view of Hill End and, as our tourist numbers are not massive, businesses need consideration to remain viable. Prints and Images opened every weekend. Let us hope the 'Avalook syndrome' is not repeated. The CWA rooms, housed a bric-a-brac shop until the rent increased to an uneconomical amount and thus has remained empty for several years now since. It proved an uncommercial action by the Service and closed a well-frequented tourist attraction, of which we have too few.

Ronald Charles

The Stamper Battery

October 2007 issue

Whether you like it

Spring weather produces sudden changes that can return us abruptly back to winter. This gives the health profession their annual bonus, as we all come down with colds and flu as a result. As the days get longer we tend to wake earlier. Once we begin to get used to it, we are plunged into Daylight Saving and a new round of body clock adjustments. As we reacclimatise, 5° morning temps seem cold; whereas a few months ago it was zero and that made us feel cold. We were still getting frosts in late October. So dry, the drought returns, never ended. The little bit of rain we had recently sounded more like mice in the ceiling until the patter became a little more regular, such is the lack of rain that we didn't recognise its sound. **Ronald Charles**

New Trees, New Seats, New Fences

The good work of watering the young trees by Peter Mitchell, Sheena Goodwin and Ross Brown is now bearing fruit, though strictly speaking none is a fruit tree, the young trees are budding up nicely. "We lost one out of 18 trees", Ross said, "not a bad result". Bathurst Council did another Tree Audit of the Avenue for safety purposes. They will replace the trees, but will not maintain them.

A seat has been installed near English Lane and another outside Forky Stick Farm.

Parks have replaced the fence at Lyle Park with a new post and rail fence. The Camping Ground fence was also replaced in Narrow Leaf Ironbark "The best available" said Matt Burns. "This will last 120 years". **Ronald Charles**

Grants

Gaye Shanahan was successful in getting a grant for the Hall. Bathurst Council gave \$ 2900 to provide equipment for the new Kitchen. She was also successful in getting grants for the Cricket Club and the Fire Brigade. We should pursue grants from the NSW Heritage Office. Think up ideas to improve and revitalise the Avenue, which incidentally is not listed on the Heritage Register and should be.

Ronald Charles

Local Jumpers

Ann and Eric Barry of Silent Dale are making garments from their sheep and alpacas. They also dye to produce vibrant colours. There is a difference in the fibres: wool is a solid fibre, alpaca is a hair and thus hollow, making it warmer because of entrapped air. "Blended with wool, alpaca makes a nice warm jumper," Ann said. They also use wools blended with silk and work with mohair, another hollow fibre. (Ph 209) **Ronald Charles**

The Running of the Bulls at the Lodge

Phil Butler's prize bull, Hans ended up in Bernie's front yard. "He was very happy and contented there," Bernie said. "Phil tried to walk him over to the gate but he didn't want to go that way. Kim dived through the fence when he came her way. He became agitated with all these women trying to push him around. Then he pig-rooted and chased Sally Krywulycz round a tree, he got up some speed for such a large animal. We couldn't help her as we were all on the ground laughing. Phil enlisted Storky and a couple of earnest citizens to herd him back to Alpha Rd, but next morning he was back at the Lodge. **Ronald Charles**

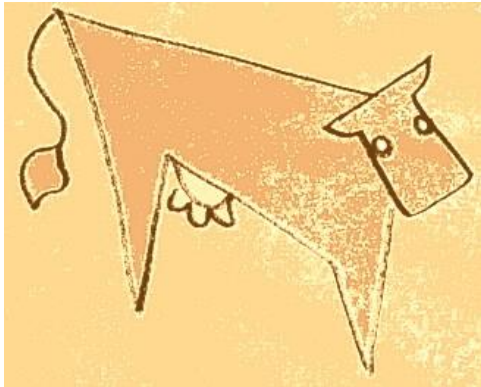
The Stamper Battery

October 2007 issue

Cows Past

One of the remarkable moments of my life was to see Popeye cow calling. The cows have a language. A particular sound must mean that there is food here and come and get it. The back of his Ute filled with hay and the cows all came running. Alas the cows have long gone, deported by zealous insurance. A unique atmosphere lost.

Ronald Charles



Cow Memories

Last train to the Ranch

“People just love the new carriage, with 2 units, both different. The rear one more masculine” Kerri said, “the Drivers call the front one a Bordello, because of its lush fabrics”. They are two ‘new’ old carriages, only one is fitted out so far. “They were in a deplorable state when we found them in Gunnedah and it was a labour of love to bring them back.” Kerri continued. “As we had stripped the paint, we knew we had to expose the timbers. The timbers are Silky Oak & Red Cedar, some Cedar planks are 40ft long. The doorstep is so dense it sparks if you sand it. They were built in 1908 by shipwrights, who had lost their jobs with the advent of iron ships. NSW Railways employed them and everything is perfectly constructed, even the guttering is carved”.

Ronald Charles

Local News and News of Locals

Punters Succeed at Last

Maxine Anderson had an amazing fluke. Her turn to bet for the Punter’s Club at the Royal Hotel and the horses really did come home for her. Dandy Dollar rode home 66 to 1 giving the Punter’s Club windfall of \$502 including her other wins. Enlivened by her win, Maxine went on to talk about Cud’s Room, “you couldn’t go into that room unless you were going to bet. And that’s why his portrait hangs over the door”. Cud Denman was, many years ago, the local SP Bookie, he worked in the room that’s the Poker Machine Room. Ronald Charles

Cancer Council Raffle

Was won by Joan Auld who deserves the honour for all the raffles and Hoy Days she has organised over the years. The hamper was full of interesting foods and goodies, and lots of them. Ronald Charles

Margaret Fletcher reports from Tasmania

Lionel is really busy - pretty well considering - apart from a cataract operation, he has a HUGE shed that makes his one at Tambaroora look like a doll's house! AND!!!! We have power!! - It was a bit Heath Robinson at first, but between Lionel and some friendly tradesmen, we are gradually sorting it out -got power points put into all the rooms - up till then it was extension cords everywhere - it is SO Hill End! I went back to school. Did my Dip of Art a couple of years ago, and am part way through Cert IV Arts Administration.

I really miss Hill End and the people - there is no place that can ever-quite measure up to those times.

Margaret Fletcher

The Stamper Battery

October 2007 issue

Jill Groves

Jill is retiring from her position at the School at the year's end. She is best remembered by the town for her School plays. We will miss the Groves touches in their writing and presentation. She created strong characters and captivating tales. In her last play, she gave roles to the Staff. A review at the time, "Our normally dignified Principal swanned around sprinkling Avon products high above the family." A stroke of pure Groves. For her swansong, she created a Musical Theatre. A review at the time, "The layout of tables made for a cosy atmosphere. The 1st School Supper Play was both delicious and a success".



Jill Groves

Jill Groves began teaching in London, coming to Australia on a £10 fare for 2 years. "I ended up staying". She taught in Sydney for 5 years (with time out for children of her own); then Cooma, Raglan and Eglinton and lastly Hill End. "I have loved teaching here, a very enjoyable end to a 46 year career". Next year, she will be on call for Hill End and will pursue her hobbies of embroidery, vegetable gardening and the inevitable computer.

As a Community, we have been fortunate to have the skills and dedication of someone like Jill Groves. We wish her well in her retirement with her husband, Dave. **Ronald Charles**

Hill End Arts Council Inc

22 people attended to convene this new group. Its mission is to promote the arts in Hill End and give support to the local arts community.

At the inaugural meeting, chaired by Ross Brown, Gavin Wilson was elected President, Kim Deacon Vice President, Gria Shead and Luke Sciberras Joint Secretaries, Maggy Todd Treasurer and Hui Selwood the Returning Officer. Fees, funding and ideas were discussed at this meeting, and connections with HETPA and Arts Out West. The name has since been registered, & incorporated with the Dept of Fair Trading. The 2nd meeting "will be looking to build an economic base through membership and work with local creative input in a continuing conversation", as Gavin so neatly put it. Restoration of Haefliger's furniture will be among options considered for funding in the New Year. **Ronald Charles**



Days End-Rosemary Valadon
Cricket

It is back on season with our first games with Hargraves on 11th Nov and Pyramul on 25th -all matches away. **Ronald Charles**

Tennis

Leita Kimm reports that that tennis too is back in season and courts will be active again with players. Meanwhile the School students have been learning to play tennis every Friday. **Ronald Charles**

The Stamper Battery

October 2007 issue

History romanticises

In 1861, John Piesley bailed up and robbed Richard Cox of £565 and his pistol as he rode along the road between Bald Hills (now Hill End) and Louisa Creek (now Hargraves). Mr. Cox worked for the Bank of NSW, hence the large amount of money. It was not a bad haul, considering a labourer made £ 30 a year. Piesley was hung a year later.

We have to be careful in telling our stories. As Brian Hodge said, "History gets romanticised". He pointed out there was no branch of the Bank of NSW in either Hill End or Hargraves at the time. However he did say that there was a branch in Sofala in 1868 and its Manager was arrested and convicted for robbing his own Bank. **Ronald Charles**
Sources: Andrew Stackpool scs.une.edu.au, Daphne Shead and Brian Hodge

Ultimate Fighting

Saturday mornings at 8 am, Ben Smith teaches grappling for women and beginners and he emphasises that this is in no way connected with the Police Service.

Everyone is welcome; it costs \$ 2 and people participate at their own risk. "Basically" he said "the aim is to take your opponent to the ground. For the defender on the ground, the technique teaches you to fight back from the ground to regain the advantage". At 8am on Tuesday mornings, there is Full Contact Martial Arts, again for \$ 2. Venue is the Courthouse. **Ronald Charles**

Dr Wilson's next visit
13th November
Ph. 263 for appt.

Clinic Report



Spring is a volatile time: weather-wise and health-wise. It is the season for some of the irritations of life: Asthma, Hayfever, etc. With hayfever, David suggests, you can avoid discomfort by closing your doors on windy days. Avoid sunburn, with sun block remembering the strong link to melanomas in this country. **Ronald Charles**

Hill End Library Van
31st October & 12th December

Fire Fighting Training
November 24th & 25th

Police Report

Minor thefts have occurred recently. CDs, a stereo and a battery were stolen from cars. A 'paddock basher' was stolen and Ben Smith asks that we keep an eye out for it, it is easily identifiable. An orange & black Suzuki with a gold pan stuck on the bonnet. A firearm was seized in Sofala and a man was arrested there after an assault. Police were called to Domestic. Ben patrolled the Camping Grounds over the long weekend and enforced the fire bans along the Bridle Track. He responded to reports of trespassing and the milking of a water tank. He makes business inspections of the hotels and rural patrols on the back roads, especially the crossings after rain (?).

Ronald Charles

The Stamper Battery

October 2007 issue

Lorraine Miller

Wishes to thank the community for their support she received on Ken's Passing. She was comforted by the many cards and letters of condolence that comforted during this sad time. Expressions came from all quarters and she really appreciated it and it sustained her to an extent she can barely express.

Lorraine appreciates those who put together the Afternoon Tea on the day of the Funeral. Lorraine says that she intends to stay in Hill End.

She had many people through Ackerman's Cottage on Open Day, a fine gesture all things considered. Beforehand, she finished off the Blacksmith's Workshop that Ken built on the original footprint. **Ronald Charles**



Haefliger's

Work on Haefliger's Cottage

Rod Burton replaced the front wall there recently. It had fallen outwards by 15°. It had been built upon a log laid on the ground, which had rotted out. The top plate had been white-anted. The concern was the wall was liable to collapse. Parks are thinking 100 years hence and how the building will survive. Rod put aside the original wattles, (the sticks between the posts to hold the mud in place). The mud (the daub part of it) was also put aside for reuse.

Rod did the work on Murray's Cottage. Back then, he recommended I stand on the hearth, "Notice", he said, "the door goes this way, the window goes the other way and the ceiling in between goes both ways". His assistant at the time, Matt Lonsdale said of the house, "it has the sensuous lines of a beautiful woman". Who can better that?

His grandfather was born in that house and 42 relatives come from Hill End, so it was appropriate that he was working there. **Ronald Charles**

Dean Music Weekend

Dean Taylor sang both at the Hotel on the Saturday night and in the street on Sunday to celebrate the Parks Service 40th Birthday. **Ronald Charles**

Parks 40th Birthday

Open Day was also the 40th anniversary of Hill End being declared an historic site.

Peter Myler spoke on behalf of Parks, and the ups and downs of a 40 year relationship, that was currently one of accord and communication.

A free sausage sizzle was laid on, and music provided. Dean Taylor in his relaxed fashion led the show, rocking into the evening. He soon had the crowds dancing in the street. Lester Ives, a Discovery Ranger at Blue Mountains National Park played didgeridoo and Andy Pix joined in playing some old favourites.

Indeed a pleasure to see the Hill End street party atmosphere return, after too many years absence.

Parks gave us a present on their birthday. **Ed.**

The Stamper Battery

October 2007 issue

Hill End Gold Limited

Andy Pix, new General Manager of HEGL operations, spoke at the Oct. Progress Meeting. An experienced mining engineer having worked in Canada, the US, South Africa, Mt Isa and most recently in Kandos. He told us of projected plans on local mining operations. An opportunity for the townspeople to learn what's happening. Concerns were addressed & fears allayed in an open forum. Below Hawkins Hill, a new processing plant is being installed outside the Amalgamated mine. The Amalgamated tunnel is being extended under the Connie Dam towards the Exhibition Shaft, (it is halfway there), following the Mica Vein towards the Paxton Vein. Near the Exhibition Shaft, a new ventilation shaft will be sunk, with a secondary function as a means of escape. Andy noted that it's costly and dangerous to re-open old shafts so a new one is necessary. A drill will drive a pilot hole of 10 inches diameter down to the tunnel 239 m. below, then be replaced by a reaming head of 2.4 m. diameter to widen the pilot hole to a shaft. The drill will be on site for 35 days operating 24 hours a day. Environmental controls are in place regarding noise & sediment from the drilling. The sludge will pass through 2 settling ponds then reused in the drilling and silt traps are in place. The Dept. of Primary Industries inspection of this lease produced a complimentary report. In 2008, drilling resumes in the Scandinavian & Germantown areas, governed by a review of Environmental Factors. There is also a drilling program for Red Hill and one at Hargraves. The Company will conduct sample tests from Red Hill and initially the ore will be transported to Hawkins Hill. "We

envison 10-20 tonnes will be tested for mineralisation", Managing Director, Philip Bruce, said. If warranted, a separate sampling plant may be set up at Red Hill. At first this will be a small open cut operation, less than 20 m. x 40 and may go underground, depending on the grade of the gold there. Philip added, depending on the proving up process, the centre of activity may move to Hargraves. Philip pointed out that despite an investment of \$ 6-7million since 1994, they are still in sampling mode. He awaits moving from sampling to small-scale production. This year they plan to put in another \$ 10million from the \$ 16million recently raised. He noted 30% goes in wages. Currently, 17 people are employed, plus part-time staff, about half being local residents.

Residents' Concerns

The main one was environmental impact. There are strong environmental defences in the requirements of approval from the Dept. of Primary Industries. Traffic was another concern. Jim Shanahan responded, "All our employees & contractors are required to abide by the road rules, in addition HEGL have imposed on said a 20km/h speed limit on the gravel roads close to our site office, helping reduce the dust problem for residents living close by".

The Company is aware accommodation is getting scarce and is thinking of future requirements, depending on the focus of future activity, whether at Hill End or Hargraves.

Town Water

Hill End Gold's bores will be outside the town's aquifers and may be able to supplement the town's supply, providing a backup if required. Red Hill will tap a different source of water when needs arise there.

Ronald Charles

The Stamper Battery

October 2007 issue

HETPA President's Report

Our President should be back from his trip to Paris in time for the next Stamper battery so again I am reporting to you.

The kitchen at the hall is ready for use and instructions on how to use the appliances are to be placed near by so that there should be no doubt as to how to get things going. They may be superfluous to most people but gas and inexperience do not mix and we do not want any explosions.

The CSO's have been working removing cut down pines and removing other debris from around the town. We welcome their help and are fortunate to have their assistance. Due to the early winter rains the CSO's will commence mowing the Avenue and this makes the village look delightful.

On the Avenue the new trees have almost all broken their dormancy, although there are a few laggards, and the survival rate has been pleasing despite the drought.

By the time this letter is published the National Parks Division will have offered four houses for conservation leases so we should be able to look forward to new (hopefully) residents. If not, then at least the houses will be conserved and look lived in.

An inaugural meeting to form a Hill End Arts Council has been held and office bearers were appointed. Gavin Wilson was unanimously elected President as was Kim Deacon to the Vice Presidents position. The first official meeting was to be held on the 24/10/2007.

The primary focus of the Arts Council is to secure funding to conserve certain buildings and the Haefliger furniture; this is a worthwhile project and has the support of the Progress Association.

Perhaps the yellow boat in front of the English Cottages is the first of many "artistic installations" we can look forward to observing around the village.

The Progress Association wishes the Arts Council success and looks forward to co-operation with them where ever possible.

Craigmoor was opened for inspection on the long weekend and attendance was similar to last year.

Open Day visitation was 106 and again thanks to Sheena who organised most of the details.

Ross Brown
Vice President
HETPA

Visit www.hillend.org



Rosemary Valadon-Hill End

The Stamper Battery

October 2007 issue



John Gould -Crimson Rosella
The birds of Australia 1840-48



Tail feather Blues

A flash of bright blue caught my eye. A tail feather from a Rosella I immediately thought. Approaching I saw more feathers, and I realized with sudden horror that I had not found a single dropped tail feather, but a killing zone. A fox, cat or some other predator had ambushed a female Rosella. Only the few remaining feathers bore evidence to this brutal act of nature. Rosellas mate for life. Every evening afterwards her mate would sit in the plum tree directly above the woeful site, plaintively whistling for his lost eternal partner. After a week or so he spent evenings sitting low in the trees in seemingly morose silence.

Ed.



The Stamper Battery encourages input & info from HETPA members. It was therefore a pleasure to get this interesting and enlightening feedback.

Reader's response

I read with interest in your previous issues references to me and my old teaching school, Sydney Technical High School (1961-67). On the final day of our excursions we held tree planting ceremonies. 'Red Jack' Ellis dug the hole and planted the tree for our group. Norm Cross, on behalf of the Citizens Association, which then owned the ground, responded sometimes with a poem, and usually with tears in his eyes. The trees lining the western boundary of the Village Camping Ground were the gifts of Sydney Tech. High students in the 1960's. I thought your readers may be interested.

Brian Hodge
Tambaroora

HETPA Membership

New members are always welcome.
Membership Fee-\$10 Per annum
Concession \$5
Stamper Battery via Australia Post
extra \$3 to cover postage cost.

Payable to
Jim Shanahan
Treasurer
HETPA
c/o Hill End P.O.
2850

The Stamper Battery

October 2007 issue

Recent Art Residencies

Annabel Nowlan Murray's Cottage

"I used to get into trouble in the Etching Class because I liked the plate better than the print off it. I draw with an engraver on aluminium. Then I paint over it. I use found materials and media such as tin and bitumen. The result gives the feeling of a journey. I've always been intrigued by mapping. I borrowed a manual from Hill End Gold and got from it symbols and map legends. I am interested in new ways of dealing with landscape rather than traditional landscape painting. I find the early maps and symbols quite evocative and I like the ambiguity if you don't know their origins. From my little studio window, I was enamoured by the transformation from the winter garden to the beautiful spring flowers. The window mullions became the frames of little paintings I did when I was so cold. The paintings related to the changing of the seasons and became quite colourful. This is something new for me, so Hill End has had an effect on me.

Ronald Charles



Murray's Studio Window-Annabel Nowlan

Ed Douglas and Ken Orchard Collaboration

Gavin Wilson included both Ken and Ed in his exhibition "Fireworks".

Ed Douglas Murray's Cottage

Ed, a photographer came to Australia in 1973 from his native California. "This landscape reminds me of Northern California, where the gold rush began. That's how Hargraves found Ophir. There are similar rock formations in both places and he recognised something from his American experience".

He started the BA Program in Photography at the South Australian School of Art. Now retired.

Ed met Ken as a student there.

Ken and Ed have worked together before on a gold site in the Adelaide Hills.

Ed searched out the locations of where Merlin took his photographs. He uses the same format as Merlin although a different size. He seeks out the same time of day to get the same mood.

"There is an emotional element when you are standing in the exact spot that Merlin stood in 1873", he said. "It is a homage to the tradition and to the person".

Ken Orchard Haefliger's Cottage

Ken works at the Art Gallery of South Australia and is interested in the work of George French Angas. In the 1800s Angas did drawings and watercolours in the field, mainly in South Australia. But when gold was found at Ophir, he made his way there. From his drawings, he published a folio of lithographs of the gold fields. So the Bathurst Gallery was interested when Ken and Ed proposed that they visit Ophir to view it now. In Hill End, Ken looked at the sites associated with other artists, such as Haefliger, Drysdale and Olley.

The Stamper Battery

October 2007 issue



Ken Orchard-Ophir

He made pen and ink and brush drawings to worked up for an Exhibition in Bathurst in January 2009. It will be a multi-level exhibition the Angas lithographs being brought up from Adelaide.

Working with Ed, he looked at the Merlin sites also.

Together they have been busy, camping 5 days down at the Turon Crossing and at Ophir for another 5. "It's been a challenge to seek of sites of relevance", he said.

They are both grateful to BRAG which sponsored their simultaneous residencies.

Ronald Charles



Great Western Store- www.flickr.com

Hill End Gallery
Visitors Centre
Hill End

26 Oct - 6 Dec 2007

Bill Moseley- Nocturne



Bill Moseley

Opening- 6pm Fri 26th
Nocturnal landscapes and 'film noir'
portraits by photographer Bill Moseley.
Presented by the Bathurst Regional Art
Gallery and opened by John Firth-Smith.