

The Stamper Battery

New Year Issue (January 2008)



Bright Cottage-Tamyka Lawler

Beginning at the End

Throughout December, until January 10th Hill End Public School held a display of the students' art works at the Jean Bellette Gallery at the Visitors Centre. The gallery was a rainbow of bright colour making up perhaps the most interesting show of the year. The natural unselfconsciousness of the works and high standard are a credit to the students. Although an isolated School, the students benefit from the BRAG Artists-in-Residence who hold workshops at the school. Culture is an important component of a well-rounded individual and our students have a truly unique opportunity in this regard. The quality displayed shows the benefit of the visiting artists to the pupils. It was an

almost impossible task to select examples from such an array of quality images, A great Christmas show. Ed.



Mushroom Madness-Jackson King

The Stamper Battery

End of Year School Presentation

Presentation Night was an enjoyable evening with many choral interludes. To celebrate Jill Groves' retirement, there was a surprise for her in a series of photographs of her years in Hill End. **RC**

Annual Christmas tree

The Cricket Club hosted its Annual Present giving. Santa put in his usual visit at the Royal Hall this year, instead of at the Cricket pitch as he normally does, due to inclement weather. His arrival and departure heralded by with sirens blaring on the Fire Truck that he uses as his Hill End sleigh. **Ed.**

Frog Poem

Mary had a little frog
Its skin was lumpy and green
Saw it down the road
Ugliest thing I've ever seen

She took it to Bow Peep's
But Bow was fast asleep
So she took it to the barn
That's how she lost her sheep

Took it to Mother Hubbard's
Let it play with her dog
But it ate all the food in the cupboards
It was a pretty greedy frog
Took it to the Man in the Moon
Swapped cold porridge for hot
The Man burnt his mouth
And thought the frog was snot

She took it to Jack Sprat's
On the table it sat
The ugly thing turned him and his wife
Off lean and fat

It went to see Jack Nimble
Jack was quite very quick
When he saw the green little blob

He jumped over the candlestick

She took it to see the three mice
It chopped off their tails with a knife
The sight of blood scared the mice
And turned them all blind for life

She took it to Miss Muffet's
Who was eating her curds and whey
The frog sat down with the spider
And little Miss Muffet ran way

On their way to see the Butcher
They stopped next to a drainpipe
The spider inside saw the frog
And lost his grip at the sight

There was an old grandfather clock
At the Butcher's shop
A mouse was on top of the clock
But fell to the ground with a flop

They went to see Jack Horner
But Jack had been sent to the corner
Jack ate some pie and found with a sigh
He'd bitten the frog, what a horror

Mary had had enough of the frog
So she went to a French man
She traded the frog, whose name was
Grog in for a sweet little lamb.

Jessica Gilmore

Holterman's Complexities

Open again following Phil Wilkins's departure for Vietnam. It is now being operated by Miss Laura Burns with Shiralee Seaman assisting. 'I'll be offering focaccias with sun-dried tomatoes' Laura said, "I want to get the Community back into the place and create the old feeling it had. She is a coffee perfectionist and that will bring the customers in. The hours are 10 till 2.

RC

The Hill End General Store



Julie Gilmore tells us that they have celebrated their first year in the Shop. It does not seem that long since they took it over. We offer our congratulations. RC

Hill End-NSW Heritage Presentation Parliament House Sydney

www.heritage.nsw.gov.au

As mentioned in the previous issue, through the instigation and motivation of Sherryl Welsh, Hill Enders received 2 Heritage awards. Attending Parliament House Daphne Shead received a Cultural award for Historical Research, in recognition of her hard work and true dedication to local family history research.

www.hillendfamilyhistory.com



Daphne Shead receiving her award

The Friends of Craigmoor group received an award also, in the Built category for Promotion. In recognition of their tireless efforts in promoting, preparing and presenting the popular Open House Days.

The Friends of Craigmoor were represented at the award ceremony in Sydney by Tony Hubbard and Peter Dorling.

Ed.



Friends of Craigmoor representative recipients
Tony Hubbard and Peter Dorling

CWA Rooms

The Hill End Ladies Meeting HELM has approached Parks to get the CWA Rooms back for community use. Women of the region have been meeting informally over the past year in private homes to socialise and extend support each other. During difficult times women play a major role in supporting their families emotionally and this would give them a meeting place.

It is also a chance to alleviate the isolation experienced on the farms in the Region. Mothers are interested to use the space outside of the visits of the Galloping Gumnuts. The Hall they find is not intimate enough for small children. Being beside the Lyle Reserve, it is ideally placed in summer and in rain. There is a need for a neutral and central meeting place for dialogue.

The early ideas HELM suggested include craft, a book club, re-establishing the library depot and a swap and exchange. The Common trust is supporting the initiative. It needs a meeting space and the Trustees want to contribute by displaying their photographs. Daphne Shead would like to bring the Hill End Family History Office down from the Visitors' Centre to a wider audience. The Women of Hill End want the CWA Rooms returned to its original use and to the Community that built it. RC

Common News

Hill End & Tambaroora Common Trust News

'The Hill End and Tambaroora Common Trust' has been successful in receiving a grant for weed control from the Lands Department. This includes infestations of blackberry, briar, gorse, patterson's curse, serrated tussock. The work will be carried out in Jan/Feb 2008.

We would like to report that the cages for catching feral cats have been very successful resulting in increased safety for our precious native birds and fauna. These traps can still be leased out at a very reasonable cost from the Common Trust.

We are also supporting the movement to have the CWA hall returned to the Hill End Community, for use by Women's' groups, Daphne Shead (our award winning genealogist).

And the Common Trust Plans for the New Year:

Work on the Catholic Cemetery for which we can receive a small heritage grant from Bathurst Council, and lobbying for work on the road to the cemetery.

Also, we would like as many new members as possible.

If you reside in the Common area of Hill End

and Tambaroora and own less than 20 hectares of land in this district, you are eligible to apply.

Write to the Secretary c/o P.O. Hill End, or ring 6337 8155.

Rosemary Valadon
Secretary
HE&T Common Trust

Hill End Family History Report

Denman's Cottage

Denman's Cottage is located in Reef Street, Hill End and comprises Portions 322 and 321.

The lots are bounded by Reef Street to the east and an unsealed track to the west.

The stone front of the cottage is visible in a Holtermann photograph of Hawkins Hill taken in 1872. So we can therefore assume that the cottage could have been completed by the mid 1870s.

The cottage, which stands on Portion 322, was granted to Alexander Bishop in 1879, but it has been suggested that he occupied the site for some years before that. The occupancy of the cottage between 1881 and the early 1900s is unknown. It is assumed that it was leased from the Bishop family who had left Hill End after the death of Alexander Bishop.

The Denman family were known to have occupied the cottage since the early 1900s. But when the NPWS acquired the property in 1976 it was still registered in the name of Alexander Bishop.

In 1973, Portion 321 and 322 were officially designated 'abandoned lands'. In 1976 the cottage was occupied by a Mr. Molesworth on a part time basis. He was the last known occupant.

Daphne Shead



www.hillendfamilyhistory.com

BRC Mayoral Visit

Paul Toole, the new Mayor brought a party of 7 Councillors and Heads of Departments to this their last Village Meeting. The good news is that we were successful in obtaining grants for the Hall: a new floor for the storeroom, painting internally and externally and repairing the backdrop on the stage. Paul pointed out we have received \$ 90 000 over the last three years, which is a good recognition of our existence. Remember, we were very concerned when Evans Shire was amalgamated with Bathurst that we would be forgotten. And we have to thank our Progress Association for their efforts in getting these grants and of course Bathurst Regional Council.

RC

Roads within the village

The roads in the se. sector have been sealed as promised by Bathurst Regional Council at a cost exceeding \$ 100 000, the Mayor told us on his visit. People voiced their thanks for the reduction of dust resulting from the work. The preparation was intense with heavy equipment preparing wide thoroughfares suitable for a city. Comment came from the floor about the dangerous “lake” near Hosies when we have heavy rain. The gutter is very deep there where it leads into the culvert that takes the water to the creek. The pipe that conveys it is a heritage brick pipe, belonging to Parks. Maybe the solution is to duplicate it with a large modern pipe.

RC

Roads beyond the Village

Doug Patterson, the Council’s Engineer reported on the progress of work on Bathurst Road, when he accompanied the Mayor. The stretch of 4-5 km from Sally’s Flat toward Hill End, costing \$ 706 000 will be sealed in mid-January. That will leave about 10 km of dirt. When you think about it a lot has been

accomplished over the last decade, when there were only two small stretches of bitumen from Coles Bridge.

RC

Crown Roads

Unfortunately the grading of these roads cannot be done by Bathurst Regional Council. Not just ours, but all those throughout the Shire, Council has resolved only to grade dedicated roads. The Lands Department has responded in the past that they are not road builders. We are faced with a no-win situation. David Sherley, the General Manager said, “we just don’t have the money”. Council’s position is understandable, though regrettable. We have to think of another solution to get out of this dilemma. Maybe the Combined Villages of the Region should take the matter up with our State Member, Gerard Martin. Certainly there are too many tracks that have the appearance of a Crown road and that means a lot of work to sort out this complicated mess.

RC

Planning Matters

David Shaw, the Director of Planning told us that the Local Environment Plan has been held up through reconsideration by the State Government. We will have the opportunity to comment on it in early 2009. Much of Hill End will escape it because it is a Historic Site.

RC

Trees in the Avenue

Council has carried out an audit across the Shire and work will commence next year. The priority will be for the removal of dead and dangerous trees. Concern was expressed about the special character of our Avenue and we were reassured that it would be respected. The Mayor suggested that there should be only one point of contact in the Town so that proper liaison can take place and our needs met.

RC

Tractors through Town

About 20 tractors passed through in a mighty roar; obviously a vintage club event. Someone said that such an event should be publicised in advance, so that kids of all generations can enjoy the arrival.

RC



Local Tractor

Tourist Visitation

Parks statistics on tourist visitations reveal some interesting facts. The number of campers this year is close to the average over the last 14 years at 4538 but that number is a third of those who came in 1984 to 87 (the average then was 13413 campers).

The corresponding Museum visitations have declined even more sharply (24 % Visitors this year are projected as 6972 Compare this to 1984-1987 (28838 visitors).

RC

Weather

It was the coldest November on record! November was also wet with 136 mm and December looks even wetter. We must remember that this is the driest of continents. To some extent our thinking is short-term and our records are scant, being only 250 years old. Yes, climate change is upon us.

RC

Indonesian immigration

Koels have just flown in from Indonesia.. The females are brown and white striped and the males are black. Also from Indonesia is the Cannel billed cuckoo, according to Luke Sciberras. It looks like a big grey Currawong with a rasping squawk.

RC

Black Cockatoos Squawk

They were back for the pinecones, so beware of falling cones. They are reputed to be a storm bird and that is correct. We got a good storm out of them this time. They rediscovered Hill End back in 2003 and had not been seen for 40 years before that, according to Herb Thompson. You hear them before you see them.

RC

Introduced Pests



Scotch Broom

A yellow flowering bush, introduced by Governor King in the early 1800s as a hops substitute (Aussie beer lust!), then adapted as ornamental. In 100 yrs it had become pest and declared noxious. Also known as Common Broom, European Broom, Scots Broom, Irish Broom, English Broom, and, controversially, "Scotch Broom", a spelling best avoided as it causes offence in Scotland. Broom is closely related to the gorse bush.

Ed.

Blackberry

Were first introduced in the 1840's, as both a fruit source and hedgerows. Within 40 yrs recognized as a pest, Abundant in Hill End.

Ed.

Hill End dived bombed?

Only a few heard it and most presumed it just a dream until they mentioned it to others the next day. After dark, late-ish one night recently, lighter sleepers were awoken by a dreadfully loud noise. A roaring plane in full dive mode appeared to be heading straight at us. Those woken awaited an imminent explosion. But only silence followed. A camper who was a Qantas engineer swore it sounded like a huge 1940's bomber about to crash. Indeed a mysterious nocturnal event.

Ed.

Hill End rubbished?

The things you find.-During a recent council cleanup we were strolling the streets (as you do!) of Kogarah when we noticed a laminated placemat sitting atop a pile of discarded kitchen equipment. It caught our eye as it was a drawing of an old country cottage. On closer inspection we were delighted to see that it was of a familiar sight, the English Cottage at Hill End. It is amazing just where these things turn up! Despite considerable internet searching we were unable to find out any information about the artist, Sidney Neighbour, other than that he seemed to produce commercial type drawings of old homes around the late 70's. I am sure the place looks a little better now than it did 30 years ago!

Lorraine Purcell



English Cottage placemat

Hill End dogged

Tiverton Resident Lynda Tompkins expressed concern for her missing Jack Russell 'Bubba' to her friend Annette. A search ensued in the late rainy night without success.

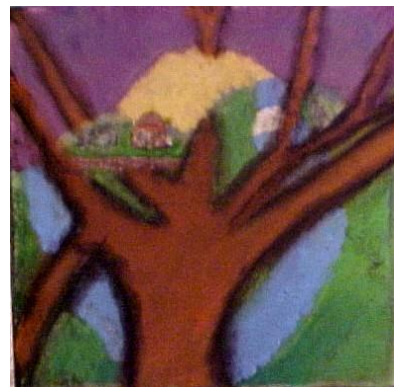
On leaving town the following rainy night, Annette spied a water soaked Jack Russell next to her ute. Wrapping the wet animal in her knee rug, she drove the dog to Lynda's.

A wool wrapped bundle with a brown and quite chagrined face and big brown soulful eyes was placed on the lounge. "Thanks Mate" Lynda said and made coffee.

Suddenly, the back door pushed open and Bubba came running in from outside. "Whose dog is on the lounge then?" exclaimed Lynda and unwrapped the look alike. Out jumped Shirley, the Policeman's dog, wagging her tail.

"The two dogs look identical" said Annette. "Yes but the difference is all in the tail" explained Lynda and, on prompt, Bubba sat next to Shirley's long wagging tail and wagged her stumpy tail. Shirley was given a courtesy ride to the Police Station the next morning.

As related by Annette Guerin



The lookout tree-Jackson King
(From Hill End Public School Exhibition)

Fond Memories

Dot Colley

Dot, wife of Peter Colley passed away in early Nov aged about 85. Dot taught at the Hill End School for some years and at Mudgee High. She was prominent in her time in the Pony Club, helping in the running of the rodeos and sports carnivals. She is warmly remembered.

RC

Peter Andren

Federal Member passed away on 4th Nov 2007. He is sadly missed by the people of his Electorate. Peter was last in town in July for his annual visit. He was seemingly in excellent health then and planning to move up to the Senate at the coming Election. Regrettably, he was diagnosed with cancer and it quickly took its toll. He was genuinely interested in his constituents. He saw issues on a broad canvas and wanted the nation to respect Hill End and environs as a part of Australia's heritage. "Is that the responsibility of the owners alone or is it a national responsibility. The Senate is where I can best offer my experience", sadly he was not able to realise his goal. "We have to think about 100 years down the track". He was aware of the 'tension' between maintaining the village atmosphere and wanting all the modern conveniences. The Sofala General Store might cost \$ 400,000 to restore. He asked the question, "Is that the responsibility of the owners alone or is it a national responsibility?" At the time he said "A lot of heritage has been lost, but I have seen a greater awareness in my 10 years in Parliament. It does however need public money. I am passionate about retaining our heritage, and it does need a public response, a helping hand, but not a heavy hand, certainly not a controlling hand".

RC

Police Report

During November, Ben has been focusing on Schools in the Region at night. He followed up a report of rocks washed across the Mudgee Road at Green Valley after a storm. A male was spoken to after he streaked across the Hill End Road. He investigated reports of a fraud, a dispute over cattle and a stolen vehicle. There was an assault outside the Royal Hotel and an illegal burn-off at the Tip. The road workers complained about drivers ignoring the stop/go bat. A driver there was charged over an uninsured vehicle.

RC

Clinic Report

Dr Wilson's next visit 8 Jan

The Clinic will be closed from Friday 21st Dec - Tuesday 2nd Jan.

In the case of an emergency phone 000, for medical advice phone your Family Doctor or Bathurst Base Hospital on 6339 5311.

David wishes everyone a happy Christmas and a safe New Year and suggests we all try to eat and drink in moderation.

RC

Library Van

Next visit is on 13th February 2008.

Election Result

Our new Federal member is John Cobb of the Nationals and the enlarged electorate goes from Bathurst to the Qld border. I wonder if he will make it to Hill End in the next three years.

RC

Fire Brigade News

A Basic Fire Training Course was held in the Royal Hall in early December for 15 people from Wattle Flat to Hill End. The Regional Instructors were assisted in the practical by locals Bernie Baker, EJ Long, Jim Shanahan and Robert Anderson.

Lunch was prepared in the new Kitchen by Maxine Anderson, Gaye Shanahan, Lyn Munro and Leanne and Hayley Mobbs over the two days of the course.

“The Kitchen was a dream to work in compared to what was there before” Maxine said, “It made it clean and hygienic. And I don’t want to see another steak sandwich for another six months”.

The Brigade has acquired a new Fire Truck. It’s a Category 1 Village Pumper and Bernie Baker said, “It augments the other three vehicles. It’s big and red, but it hasn’t been to a fire yet. So far it’s been used for the Basic Training Course and Driver Training”.

RC

The Hill End Lodge

The Shed Restaurant is open for dinner every night, though bookings would be helpful.

Phone 200 or email

hillendlodge@bigpond.com.au

It’s a pleasant place to sit outside on a summer’s evening for dessert, wine and coffee. They have a new range of wines from Bathurst, Rylstone and Orange, as well as from Mudgee of course. Hill End residents who have family visiting can take advantage of the reduced rates for local families and friends till the end of January.

RC

Pony goes Clubbing

A visiting couple, dining at the Royal Hotel in the back garden, thought for a moment that an over-enthusiastic waiter was clearing their table of plates and drinks, giving the diners no time to finish their meals.

But the shaggy headed waiter, standing there guzzling their beers and whisking their plates away, was none other than “Swags” Mattie Rattray’s beautiful strawberry roan 2-year old Pony.

Content to wine and dine amongst the patrons, Swags turned into a little larrikin when he was led away by locals and asked to keep to the grass.

Swags was here to reign, not be reined and he let a group of laughing locals know his intentions. Crisscrossing boldly around the BBQ area, Swags confronted the group, tossed his mane, swung his rear end and shook his tush.

While trotting over to resume his foray amongst the diners, someone chuckled “Wine, women and song to Swags is like honey to bees”.

As Swags wagged his tail and strutted his stuff in true Alpha male style, a laughing Russell Roberts finally stood up and let Swags know who really had the upper hand.

Swags soon submitted to Russell’s superb horse mastery, and as Mattie Rattray led Swags away, it was said “Don’t worry, though Swags may be in a paddock today, he will soon be in clover, as he is getting a girl-friend soon.

Annette Guerin

Hill End Arts Council

The 2nd meeting was held on 24th Oct, President Gavin Wilson, spoke about developing a business program and getting information from Hannah Semmler of Arts out West.

There was vigorous discussion about the things that this group would like to be doing in the immediate future.

Membership is \$ 25, \$12 concession and \$15 for out-of-towners.

There will be 4 formal meetings a year and a newsletter.

Current Matters of interest-



The Royal Hotel Sign

The Royal Hotel sign of Queen Victoria was painted by Donald Friend for the Holtermann Festival in the early '50s, and is in need of conservation. 4 years ago Stephen Coburn restored it, but it is on rusting steel. Hui Selwood pointed out that sunlight continues to destroy it, Luke Sciberras suggested an etched reproduction on zinc. But what should we do with the original sign? Leave it up or enclose it as an artifact. A computer image of the sign by Glenn Woodley could be sold as a fundraiser, as etchings or postcards. Peter Mitchell suggested stamps for Australia Post and Gavin built on that. The 60th anniversary of Drysdale's iconic painting 'The cricketers' is coming up in 2008, and also the anniversary of the famous 1948 Australian cricket team known as the Invincibles. Don Bradman's team swept through England undefeated. At the time, Drysdale was commissioned to paint a

typical scene of Australian cricket by the Englishman Hutchinson (he was not amused by the result). It was suggested that Australia Post could be approached to memorialise the event with The Cricketers as a stamp, which could be great publicity for Hill End. Gavin discussed the opportunities to advertise the art of Hill End and it was suggested looking to the breweries and the wineries as potential exhibition sponsors.

Hill End Paintings

Parks reproduced some of the iconic Hill End paintings of the past onto aluminium plaques and they have yet to be positioned at the locations where they were painted. People are wondering when this might happen.

Haefliger's Cottage Furniture

The cost to restore it will be about \$10,000 according to a report prepared by Ross Brown, Peter Mitchell, Sheena Goodwin and Glenn Woodley. The Lessor, Parks and the Lessee, the Gallery do not have the resources to restore it. A fund-raising auction was suggested and that artists who have stayed in the Cottage could be approached to contribute work. Gavin suggested putting together a proposal for the artists to consider. Julie Williams suggested a residency for a furniture restorer to work on the smaller items.

Preservation of Heritage Orchards

Luke read out his letter to Parks outlining his concerns. Suggestions flowed fast about how to preserve them and how to get advice. The best ones were to get Parks to allocate their sponsored residency to a Horticulturist and from Kim Deacon that we sell the seeds. Sherryl Welsh suggested approaching the Professional Associations to gain advice and advertise the residency.

Recent Art

Recent Dobell Drawing Prize Entrant

Ana Young recently had a drawing hung in the prestigious and highly selective Dobell Prize for Drawing. Ed.



Ana Young-Rabbit study

Recently Returned Artist

Genevieve from English Cottage recently returned from Paris where she had a 3 months Residency at the Cité des Arts. “There are about 300 artists there and quite a lot of Australians” she said. Genevieve exhibited there inspired by the Russian writer, Nikolai Gogol. “It was like a psychological landscape” called ‘The Fatigue of the Vertical’”. RC

Recently Raquel

Raquel Mazzina from the Cordial Factory had a show at Mossgreen Gallery, Melb recently during November.



Raquel Mazzina-Scat

Recent Resident Artists

Dagmar Cyrulla

Recent Haefliger’s Cottage Resident

“Normally landscape is not my preferred subject” Dagmar said, “I found the landscape very challenging because it changes so often...the light and its intensity vary so much. I now have a greater respect for landscape painters. I took the residency to look for metaphors in the landscape.”

While being interviewed, Dagmar was painting using the 3 primary colours. “I you use the purest of pigments in red, yellow and blue, you can make almost any colour” she said.

Dagmar taught at the School with kids from other schools nearby. “What you teach best is what you most need to learn” she said, “I am always challenged to free up my painting style, so it’s always good to do some freeing up exercises.

The kids tend to be a lot more open to suggestions because they have been around artists a lot and they are so polite”. RC



Dagmar Cyrulla-Church

Kaye Pemberton

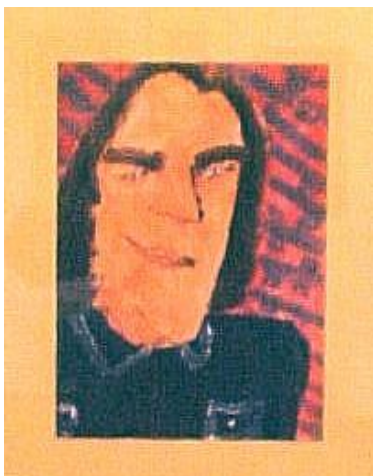
Recent Murray's Cottage Resident

A potter, Kaye describes her work as functional domestic ware, teacups, cups, sugars and plates, all things for use. "And the image it conjures up" she admitted, "is not very Hill End". Kaye has a good eye for detail and proportion and was fascinated by the hand crafted old tools; "they were made so beautifully.

Around Hill End generally I've been drawing the old buildings they reflect the sensibilities we don't see in buildings today. It's to do with the scale and the proportions; a much a more human scale, probably to do with necessity because they could only afford so much in building materials." She mused further. "It also reflects on Hill End's community today, that people are content to live in modest cottages. I do wonder though about the mining activity.

A mining friend said: 'it's all for a metal that's basically useless, and it's all romance'.

Kaye did a workshop at the School and the students produced some large interpretations of the buildings of Hill End, which featured in their 'Beginning at the End' Exhibition.



Archibald Tom-Temyka Lawler

Recent Web Images of Hill End



www.flickr.com



Great Western Store-1970's photo
www.eyeinthesky.com.au



Haefliger's Wall-Jason Busch

Online images of Past Times



1850's Turon workings- Artist unknown



1860's view of Hawkins Hill-Artist unknown

Letter from the President

Hill End and Tambaroora Progress Association.

Greetings and a Happy New Year to all from the Progress Association. Many thanks, to Ross for filling in for me whilst I was away. I am pleased to note in the interim, that further works on the Royal Hall have been funded by Bathurst Regional Council under the Rural Village Infrastructure programme. A total of \$28,600 has been allocated for needed works, including stage machinery refurbishment. I remind you that the Hall is available at most moderate charges for all events, as is the recently refurbished kitchen therein. Many of us were here on Dec. 10th in the Royal Hall, to meet with Cr. Paul Toole, Mayor of Bathurst. Amongst issues raised, the question of recycling bins being available at the tip was taken on board as a possibility, following discussions with the relative contractors. The issue of non-council roads being attended to was unreservedly negative, the council fearing that it will be eternally responsible for any gratuitous work carried out on Crown land roads. On the village roads, however, HETPA's quiet insistence has had a result in the wonderful job carried out on William, Thomas and Denison Streets by Bathurst Regional. Any issues you can think of please bring them to the next HETPA meeting which will be January 15th in the Royal Hall. Cheers,

**Bill Moseley
President
HETPA**

Cicadas Loudest Summer?



Australia has 220 species of cicada. Green Grocers come out in Nov-Dec. Black Princes and Floury Bakers start late Dec-March. Children coined the common names for many cicadas - names passed down for generations. Other names include the Double Drummer, Cherrynose Floury Baker and Redeye. The names Yellow Monday and Green Grocer were in popular use by 1896. Cicadas are the loudest sound-producing insects. They can produce noise intensity in excess of 120dB (the pain threshold of the human ear). Some species have songs so high in pitch that is beyond the range of our hearing. Only the male sings to attract females and repel birds. Male cicadas often group together to increase the volume of noise. They take around 7 years to re-emerge, but their underground sojourn can take up to 17 years. Nobody knows what makes cicadas emerge from the ground. It is likely due to warm weather and rain. When you have a year with 1,000s of cicadas out it is unlikely to have another such emergence for 5-7 years. In the gold rush Chinese miners used a traditional Chinese herbal medicine made of cicadas for a variety of medical purposes, such as a cure for earache. Which is coincidental, for many summer tourists wore cotton wool stuffed in their ears, to bare the Cicadas din that filled the air. **Ed.**



**Craigmoor Open House
2008 Dates**

Australia Day Long Weekend
January Sat 26th & Sun 27th

Easter
March Sat 22nd & Sun 23rd

October Long Weekend
Sat 4th & Sun 5th

**Craigmoor
Open House
Hill End**

Australia Day
Long Weekend
Jan Sat 26th-Sun 27th

Tour this historic gold rush home.
Substantial for it's time, with no
alteration since the 1870's. The house is
a virtual museum, recognized by
Historic Houses Trust as one of
Australia's unique historic abodes.
Craigmoor's hand made quilts are listed
on the National Quilt Register.

Tours on the hr.11/ 4pm
\$10/\$8 concess.

Bookings- ph 63378334
Presented by The Hill End & Tambaroora
Progress Association
www.hillend.org

**Hill End
Historic Buildings
Open Days 2008**

April Sun 13th

October Sun 19th

Presented by

The Hill End & Tambaroora Progress
Association

www.hillend.org



G. Makin - Drysdale Church