

# THE STAMPER BATTERY

## SPRING (October 2005)



July morn, Hill End 2005- photo Wend Lear

### Thanks,- My 25<sup>th</sup> year of visiting Hill End

25 years ago, my wife found an article in the Woman's Day on Hill End, she suggested we have a look when up that way. That was the beginning of an affair that has gone on and on. In the past 25 years, we have visited Hill End on dozens of occasions, and continue to do so. What is it about Hill End that draws people like me back, time and time again? I don't know, but what ever it is, it's magic, and infectious. I have introduced many others to Hill End, who like me, have keep returning. It's got to the point, were nobody at work is game to mention Hill End, as it initiates a lengthy discourse. I should get a spotters fee.

I have been fortunate to meet some wonderful characters, now unfortunately not with us any more. On one of our first trips, we met Red Jack Ellis panning, we talked with him, or should say, listened

to him, being the only one's on the tour. Others come to mind, such as Rudy with no socks on in mid winter, whose green Zephyr seemed never to leave the front of the Royal. There was also Ned, who appeared out of nowhere one day at the fossicking area, a lady's stoking pulled over his head to his hair line, staff in hand, followed by a dozen sheep, asking did we have any Phantom comics. Now come on, where else in the world could that happen?

Whatever it is that makes Hill End what it is, the air, the food, the contents of the Royal's cellar or something else again, don't stop doing it, eating it, drinking it. You have all given Hill End a quality that many places in the world would envy. This could go on pages, but thanks Hill End and whatever it is, keep on doing it.

**Rusty McGrath and family**

# THE STAMPER BATTERY

## SPRING ISSUE 2005

### Local History in Fiction, Fact and Song

#### **Robbery under Arms**

##### **Rolf Boldrewood**

Part of Boldrewood's famous novel was set locally; and reflects how much more populated the area was back then. The setting, from the novel, is a wedding on the Turon Race Day:

*'When they got into the carriage and drove off, they got such a cheer as you might have heard up at Tambaroora. Then all departed to the racetrack.'*

(The wedding was at Lower Turon)

*'The Turon course had 20,000 people on it now if there was one. About a dozen horses stood stripped for the race.'*

(Now Homeward Bound property at Turon/Macquarie Junction.)

#### **The Diary of Henry Morgan**

An extract from an American traveler's diary  
1853.

We passed the lower Turon mines, crossed over a high range of mountain, going up what was called Monkey Hill it being quite steep, and on the opposite side reached Tambaroora. We remained here three days. There weren't many miners here, but some were doing very well. An American, who had been here some time mining, showed us where he was getting about an ounce a day of coarse gold. We then moved on to Bathurst.

(Logistically it appears Morgan confused Hawkins Hill with Monkey Hill, both of which he would have had to encounter on his route.)

#### **Tambaroora in Song**

An Australian folk song exists about Tambaroora entitled 'Tambaroora Gold', listed as Author-Unknown, 1st appeared in 1968 and was sung to the tune of "Wild Rover No More".

The singer, down on his luck, redeems himself by moving to Tambaroora and finding gold. Now he has respect and love, but it is only for the money. When his money is gone, his girl abandons him for someone else with Tambaroora gold. (Peter McLean sang it on a record album entitled **Australian Heritage in 1974 for Polydor.**)

#### **Anarchy in Tambaroora**

In the 1800's Anarchy was a term akin to Witchcraft in the 1600s. In 1842 Sydney Councilor, H. McDermott was called an anarchist for suggesting "agricultural areas and small towns" be established on the NSW coast to encourage decentralisation. Note that in 1842 anarchy was equated with decentralisation. By 1852 the word anarchy was being used as synonyms for chaos and terror. In that year James McEachern formed the **Tambaroora Association of Alluvial Miners** to counteract merchant's claims that alluvial miners were causing "anarchy and confusion".

This was 2 years before the Eureka Rebellion in Ballarat-which was called at the time, "A well-armed group of 'foreign anarchists' set upon achieving Parliamentary democracy -- and nothing less."

**Based on 'An argument about Australian labor history.' Dr Bob James**

# THE STAMPER BATTERY

## SPRING ISSUE 2005

### First Local Cricket 1852

The first recorded cricket match locally was at Tambaroora in 1852, within a few months of the area being proclaimed a goldfield.

The next record of the game being played locally was a single wicket match between 2 players, for a wager of 2 pounds. A Tom Cummings won 10 runs to 6.

The third game held was in 1853, on the 1<sup>st</sup> anniversary of the goldfield's proclamation. Each team consisted of 9 players.

That same year Tambaroora fielded a team against Sofala for the 1<sup>st</sup> time, winning the game.

50 years later, in 1902, (Reflecting the demise of the area, a generation after the boom years [see P.4]), a local paper reported thus, "*Cricket is the dead letter this year, as far as Hill End is concerned. Tambaroora as usual, has a team.*"

**From the notes of Brian Hodge**

### Sergeant Jipp-1853

The Sergeant was killed in a brawl at a gold miner's camp in 1853. He was buried on the spot at a place which was later the Hill End Racecourse (*now Sarnia*). A stringy bark tree at the site was inscribed with the Sergeant's name and year of his death. Later, after white ants had begun to attack the tree, author Harry Hodge placed a sandstone marker at the site with the inscription "Sgt Jipp, 1853", (now vanished). At the time of his death he was stationed at Tambaroora and appears to have been a soldier attached to either the Gold Escort or the Mounted Police.

**From list of NSW Police deaths on duty posted on internet.**

### Pub Brawl 1948

Gwen Eyre told of a recent fight in the bar. Poddy had called Cuddy a choco. Cuddy resented it. They were both very drunk. Gwen didn't think it would come to anything until she saw Cuddy take out his false teeth-a sure sign in this district that dangerous passions are smoldering.

"You put your teeth back Cuddy", she ordered him. The locals are afraid of Gwen and usually do what she tells them meekly. This time however, not only did Cuddy remain adamantly toothless but Poddy took his out also, giving them to a friend to hold, and in another minute they were fighting.

It was not, Gwen said, an alarming battle. Neither of them knew how to fight and both were too drunk to stand independently and slog one another, so they had to hang on each to his opponent, consequently the performance had the appearance of a waltz.

"Stop!" Gwen yelled. They did. Poddy had let go his waltz-clutch and was looking at Gwen. Cuddy saw his chance and made a Billy goat rush at Poddy, missed, and went head and shoulders through the glass of the big window of the bar. (*The Diaries of Donald Friend- 1948*)



**Photo- Wend Lear**

# THE STAMPER BATTERY

## SPRING ISSUE 2005

### Cottage Restorer finds Gold Nugget

"I got the hammer and chisel and attacked an old door built into the wall in the kitchen- A wooden door that had been nailed back, as though it were part of the wall.

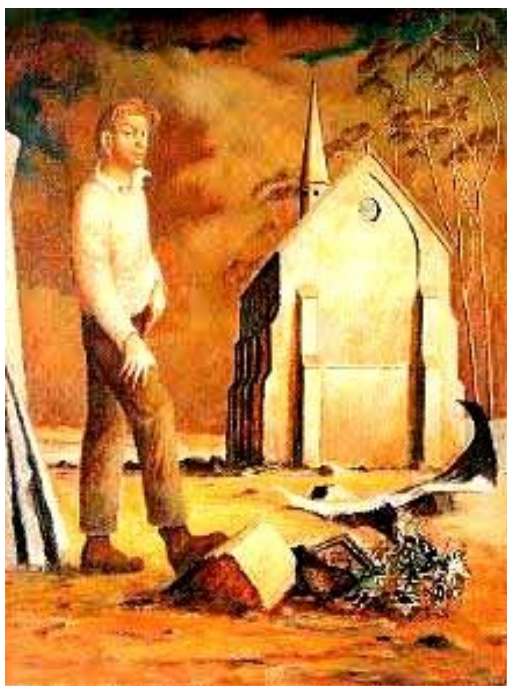
I had an idea for using it. When I got it free I found behind it-that is, in the small space of the mud wall behind it, a small pewter container.

I opened it. Inside wrapped in a rag was a nugget of gold!

It was incredible, the most romantic discovery yet in this old house.

One wonders to which of the house's inhabitants it belonged and why, having hidden it, leave it. Perhaps a death, perhaps simply forgotten."

From the Diaries of Donald Friend- 1948



'Picture of Donald Friend' by Drysdale

"...the artist seems to be gloating over the debris. Ruins have their attraction whether they are of ancient Rome or early Australia".-

Paul Haefliger 1949

### Hill End 1890's-1908 (A Town in Decline)

The 1901 census lists a Hill End population of 643 residents, whilst Tambaroora had approx.250 inhabitants. Hill End's industry had fallen silent, a shell of its dynamic glory years.

Common belief was wealth would someday return as there was more gold to be found, the auriferous rich quartz veins had been lost rather than exhausted. Combined with a long dry spell, limiting panning in Tambaroora, many began to drift away. Hard times, really hard times beset the area. Gold production figures reflect the boom/bust cycle of Hill End/Tambaroora's history.

**1865- 15,241 oz**

**1872- 79,000 oz**

**1898- 2.986 oz**

Figures include Hargraves, Lower Turon/Macquarie River.

By 1900, Mudgee paper The Western Post reported thus, "*Hill End people are now hardly able to find the bare necessities of life.*"

As the population declined so did the buildings, and many were demolished. Thomas Ackland, local wood merchant and undertaker, purchased Coyle's Club House Hotel, simply for its timber alone.

A further reflection of the decline was the government's reduction of the Common. Gazetted in 1870 as 26,000 acres, now reduced to 9,500 acres. This was much protested locally, as loss of so much land made further hardships, but the government was set in its way, and protest ignored. By this time the Hill End Borough Council, created in 1873, had become an anachronism. The thousands of residents it once served had long left the area. With such a loss of



# THE STAMPER BATTERY

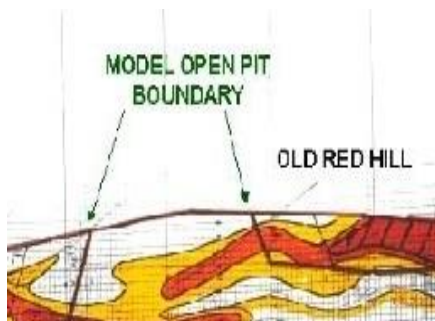
## SPRING ISSUE 2005

rate payers, the council could not fund the area, and residents refused to pay rates for no services, campaigning the government to abolish the council. Thus in 1908 it was amalgamated with the Turon Shire Council. The ongoing hardships led to a collapse of the normal social cohesion, and malicious gossip began to poison human relations. The Western Post reports again, "*As for scandal, the place is rotten with it. Oh, for a sign of prosperity, if only to give the vermin some cleaner employment than pulling people to pieces and creating mischief.*"

From the notes of Brian Hodge

### Tambaroora mining, over the years

Tambaroora has been mined from the 1850's and has had significant mining revivals over the years since. The 1930's and 1960's saw various hydraulic sluice mining attempts in Golden Gully. The field may however be reborn yet again, with the proposal mentioned in last issue to cut an open pit mine 750m long through Red Hill. (See Report p.8)



Source- [www.hillendgold.com](http://www.hillendgold.com)

### Tambaroora Shipwrecked

Tambaroora was also the name of an iron steamship built in 1875, a large vessel of 406 tons.

It was shipwrecked in 1879, on Masthead Island at the southern tip of the Great Barrier Reef.



Tambaroora 1873 Mudgee Rd

### Tambaroora P.O.

Tambaroora had its own post office from 1852 until 1923.

### Hill End Family History

Daphne Shead reports that since starting the Family History Centre, many early family descendants have contacted her.

Maureen Brooks, Publications Editor of the National Library in Canberra, has kindly donated 2 volumes of Donald Friend's diaries, recording his time here. (Extracts see Pages 3 & 4).

A website has been planned for Hill End Family History and will be operating soon at- [www.hillendfamilyhistory.com](http://www.hillendfamilyhistory.com).

Daphne has also produced a pamphlet on origins of local surnames, available in gift shops around town. Contact Daphne- [bitofheaven@bigpond.com](mailto:bitofheaven@bigpond.com).

Daphne would like to thank for their assistance – Lorraine Purcell, who coordinates the [Hill End-Tambaroora Pioneer Register](#), and locals Sandra Thompson, Marrisa Dalmas and also Kass Thompson for web design.

### Antarctica in Hill End

The 2<sup>nd</sup> week of August temperatures in the vicinity were recording minus 6, (without wind chill factor), whilst temps at the Antarctic base temp reached a sultry 5 degrees! Source- [www.news.com.au](http://www.news.com.au)

# THE STAMPER BATTERY

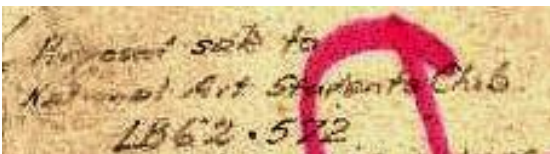
## SPRING ISSUE 2005



Denison St, Hill End- Henrietta Manning

### Art Schools and Hill End

Since Hill End was made famous to the artistic world in the late 1940's, many artists have passed through here. For some time now the National Art School has been negotiating the use of Bryant's Butcher Shop. Parish maps from the Lands Dept interestingly show that even in the 1960's a similar plan was afoot, with the 'National Art Students Club' (?) proposing the use of the then much dilapidated Hospital. [The Lands Dept. website](#) has old local maps, and this proposal is hand written across one map, an arrow pointing at the Hospital.



### Hill End in Melbourne

There is a Hill End in Victoria and Qld, but Aug/Sept will see 2 Hill End (NSW) exhibitions in Melbourne. Gria Shead is showing (successfully so) at Port Jackson Press Gallery (see last issue),- (Betty Jeffree flew down for the opening!). Previous resident artist Henrietta Manning is at the Catherine Asquith Gallery with an exhibition of her residencies at Hill End and Walhalla (Vic), another historic gold-mining town, entitled "In Face of Isolation". Her portrait of Albert Mobbs, is being used for her ad in the current issue of Australian Art Collector magazine.

### Hill End at

#### Bathurst Regional Art Gallery

28 August- 9 October

#### Luke Sciberras: A Painter's Progress



Luke's visions of the local landscape.

14 October- 27th November

#### Frames of Reference: Photographing Hill End

13 photographers have focused their lenses on the village. The diversity of their interpretations is an exciting insight into their artistic processes and Hill End itself. Artists featured –Beaufoy Merlin & Charles Bayliss (Holtermann Collection), Russell Drysdale, Alison Bennett, (Previous Artists in Residence)-Tim Brook, Dacchi Dang, Heidrun Lohr, Cathy Laudenbach, Greg Weight, Sarah-Mace Dennis, Svenja Kratz, Catherine Rogers, (Hill End residents)-Brett Hilder and Glenn Woodley.

#### Yvonne Boag: Conversations, History, Future

Yvonne's experiences as a resident in Murray's Cottage are reflected in her new work, inspired by the locals and the history of the area.

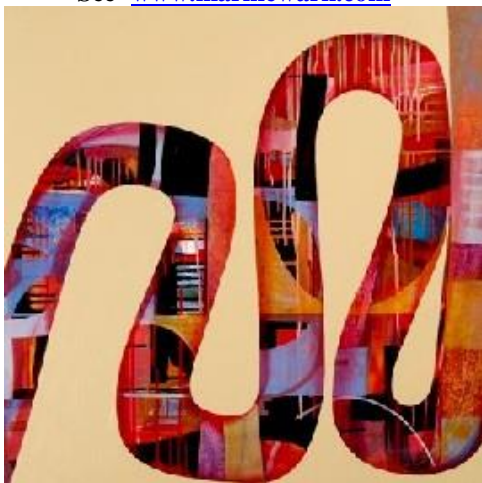
Thanks to Sarah Gurich, BRAG for info.

# THE STAMPER BATTERY

## SPRING ISSUE 2005

### Hill End in Adelaide

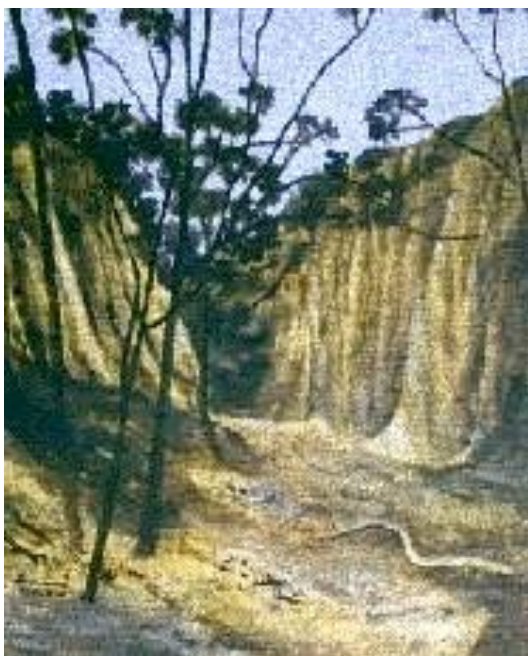
Marnie Wark, recent Haefliger's resident, will be showing paintings in Adelaide, done whilst in residence, entitled 'Fortune Favours the Bold' Nov -Peter Walker Fine Art, Adelaide  
See- [www.marniewark.com](http://www.marniewark.com)



Marnie Wark- The Bridle Track

### Crooke in Hill End

Ray Crooke's recent paintings inspired by Hill End are on display at the Hill End Art Gallery, until Oct 14.



Ray Crooke-Golden Gully

### Hill End Gallery

The Crooke show is a very different set of Hill End paintings to those shown at BRAG. There, the work was vintage Ray Crooke, areas of solid colour depicting the local buildings. In this show a hazy landscape predominates. RC

### Natasha Daniloff

Natasha collected colours locally, ochres through to purple. She used soft stones to draw with, the bright yellow of Germantown Lane was used as a wash in many of her sketches. "In Golden Gully, I felt I was walking within the earth. The reds, the golds, the creams, it's all a painting! Hill End has its own sense of time, the rest of the world can go hang. Time's irrelevant." She said, and quoted John Olsen. "We should see landscape not as real estate but as a place of magic and enlightenment." Concurrent with her Murray's residency was her BRAG show. RC



Henrietta Manning- Great Western Flag

### LUKE SCIBERRAS - STUDIO No.?

Luke has purchased a 1933 train carriage as a new studio. "I just might work in it for the rest of my life," he said, "It will be shunted to a secret location, so I can work undisturbed." RC



# THE STAMPER BATTERY

## SPRING ISSUE 2005

### The Avenue

On National Tree Day the school students planted 5 trees in the Avenue. Sheena Goodwin said that they were very excited and that it was good for them, as it would make them aware of the Avenue. "Kids don't notice that it is there," she said. The kids were enthusiastic, a real learning experience. Peter Mitchell and Ross Brown are to be congratulated, they put in a lot of work to source healthy trees from Hargraves and Bathurst. They wish to thank Jim Shanahan for putting out the safety barriers while the students were on the Avenue, and John Oates for his help. RC

### Hill End Gold

Hill End Gold reports the drilling at the Cornelian dam is a target for later development. There are strong possibilities in 'the Reward Area'. The drilling will determine how far the gold continues beyond the previous workings. High-grade material is evident, 100m below ground. The 1st stage of drilling went down 250m. However drilling doesn't always give a reliable result, bulk sampling, only possible underground, provides a more reliable indication, so underground works recommencement depends on the drilling result. The processing plant below Hawkins Hill will test samples. Red Hill also needs more drilling, just before the Ullamulla turnoff. There are zones of low-grade material evident, which require an open cut operation to recover. A target below Red Hill could be as good as old Hawkins Hill. A larger plant may be required if more deposits are found.

Red Hill would however require a separate processing plant. RC

### Motel in Hill End

Construction of The Hill End Motel is progressing at a great rate, providing employment for several locals. All the slabs have been poured for the 6 accommodation blocks (with 4 motel suites in each) and for the reception area, restaurant and conference centre.

More info- [www.hillendmotel.com](http://www.hillendmotel.com)



Concrete slabs for Hill End Motel

### The Original Stone Drains

Thank you to the Community Service guys for their much appreciated work in the village. They have been working along the main streets, uncovering the original stone road side drains that had become silted over. The cleared drains do look impressive, particularly the deep ones near the school. The group has also been working in Beyer's Avenue, helping with tree planting and erecting guards around the new trees.

### Pine Trees

Thank you to the Weekend Detention Group who has been working to reduce the pine tree infestation, by digging out saplings. A valuable contribution to reducing the bush fire hazard to town.

Sheena Goodwin  
HETPA Vice President



# THE STAMPER BATTERY

## SPRING ISSUE 2005

### Parks News

Glendora camping ground was closed for winter, but will reopen in 3 weeks. The National Art School will be proceeding this year with their application for Bryant's Butchery. The Executive Director of the Cultural Heritage Division will be visiting soon to see what has been done here. He has heard good things about Hill End and wants to see for himself. Bathurst Council is reviewing the status of tips throughout the Shire, because we have space, there won't be changes to local arrangements in the near future.

**Barrie Rogers**

Assets Manager, Parks Services

Hill End

### Clinic Report

The Women's Health Nurse next visit 2nd week of Nov. Dr Wilson's next visit Tues 26 Sept.

Bookings-63378261

### Police Report

A 29-year old male was found driving an unlicensed vehicle in Beyer's Avenue. 2 Sydney men were detected with fireworks and cannabis in Warry's Rd. A business in Hill End had a window broken. Goats have gone missing at Tambaroora, anyone with information can contact me in strictest confidence. Absentee residents contact me for inclusion in the Vacant Houses Register.

**Senior Constable Jim Allan**

### Voluntary Bush Fire Brigade News

#### **Brigade History**

As mentioned in the last "Stamper" the Hill End brigade is 70 years old this year. Historic photographs have come to light indicating that the brigade was operating as early as 1871. If this proves correct then Hill End would become if not the first then one of the earliest Brigades in NSW. Research continues.



**Hill End Fire Brigade Chief 1871  
(Identity unknown)**

#### **Village Firefighting Course**

Certificates and badges have been issued to the successful participants of the recent course. Congratulations to all.

#### **Annual General Meeting**

The recent AGM was well attended by 25 members. Newly appointed Group Captain Brendan Cole and Randall Ferrington Zone Manager were also present. A minute's silence was observed to recognise the passing of

# THE STAMPER BATTERY

## SPRING ISSUE 2005

foundation member and former Captain George Anderson. Treasurer Maxine Anderson delivered her report for the previous 12 months. Items of note were an increase in membership and the Brigade's continuing support of the local school. The President's report included a special thank you to both Robert and Maxine for 25 years service to the Brigade. In his Captain's report Robert Anderson thanked all members for their support and involvement through out the year.

### **The Blitz**

A quote is being prepared for painting. We are also sourcing parts that are needed for the restoration, if you know of anyone that could help please let us know. If you would like to become a sponsor and help with restoration costs please also let us know. All sponsors will be noted on a permanent display board in the Museum.

### **Membership**

Incomes from donations, memberships or acreage fees are the mainstay of the Brigade, so please consider supporting your local Voluntary Brigade. If you would like to join, pay acreage fee or make a donation...

**Membership: \$20.00/Concess: \$10.00**

**Acreage Fee: \$15.00 per 1000 acres or part thereof.**

**Jim Shanahan  
President**



**Hill End Fire Brigade 1877**

### Hill End School News

#### **Australasian Schools Competitions**

We are thrilled with the results of the competitions this year with Lucy King and Jessica Gilmore both receiving Credits in the Writing Competition. In the Computer Skills Competition Jackson King received a High Distinction. Brent Lawler, Jeffery Kimm and Meg Pilley received Distinctions and Temyka Lawler received a Credit. Well-done students!

#### **ishine Festival**

Once again the students and staff have been a part of the ishine Festival in making a 3-minute movie, which we hope will again be chosen to be shown at Metro 5 in Bathurst on 16<sup>th</sup> September. This year's topic is Circus and we have had a lot of fun in creating our own circus troupe, with lions, a lion tamer, clowns, a ringmaster and even a high wire act.

#### **Year 7- 2006**

We extend congratulations to our Year 6 student and School Captain, Lucy King, who has been offered a Head of College Award to attend All Saints in Bathurst next year

#### **Science Challenge**

Students have participated in the CSIRO Science Challenge Experiments again this year. Experiments are conducted in class then students submit their answers online to the Science Challenge website. These are marked and students again go online to receive their results. Completed experiments are: *Engineering – Structures & what makes them strong.*

# THE STAMPER BATTERY

## SPRING ISSUE 2005

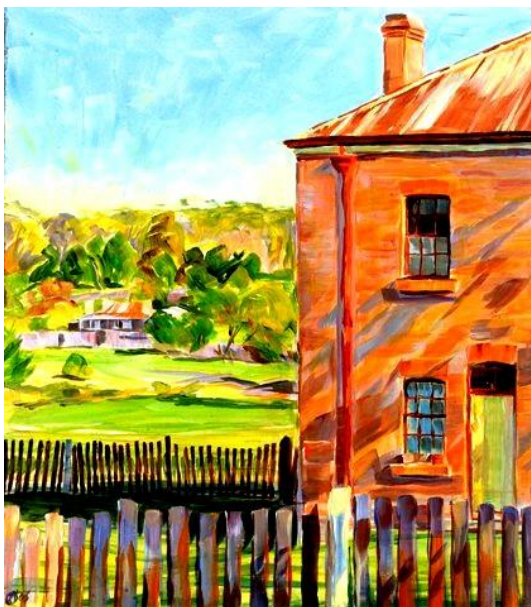
*Biology – Sense of Touch Physics, Geology – Convection, Chemistry – Using an indicator solution with acids & bases. Our final experiment is Physics – Exploring sound waves.*

### Avenue Tree Planting

Students participated in the replanting of trees in Beyers Avenue with Ross Brown, Peter Mitchell & Betty Jeffree. We look forward to Spring to see them start to grow. Back in class they used this experience with photos that were taken in writing a Procedure. This is one of the text types the students are learning about. Other text types they have learnt about are Description and Narrative and they are currently working on Discussion.

Gaye Shanahan

Hill End Public School



Henrietta Manning – Northey's Store

### HETPA Presidents Report

A grant application has been made to Bathurst Regional Council for the Helipad, the Tennis Courts, & playground equipment for Lyle Park. The Association has a trailer, which is now available for borrowing.

I want, as usual, to thank the Committee for their hard work and the Volunteers for their tireless input.

I particularly want to thank Peter Mitchell and Ross Brown for their work on the trees in the Avenue.

Barrie Rogers

President

HETPA

### HETPA Membership

Membership is \$10/Concess \$5 per annum, with an initial \$5 joining fee. There is a surcharge of \$3 for Stamper Battery postage for those living outside of Hill End. Fees payable to-

The Treasurer

Hill End & Tambaroora Progress Association  
Postal Address- Hill End P.O. NSW, 2850



Gria Shead – A Country Childhood



# **THE STAMPER BATTERY**

## **SPRING ISSUE 2005**

### **HILL END**

### **OPEN DAY**

### **Sunday Oct. 16<sup>th</sup>**



Hill End's Historic Buildings Open Day is a rare chance to view ten unique buildings, from humble miners' cottages and old churches to the historic residence, Craigmoor, with its original furnishings still intact, a virtual time capsule of the era. Also on view are two artists' residency studios, a pottery and gallery; all set within restored 1800's dwellings. Enjoy Hill End's sublime tranquility; take a stroll through this captivating historic village.

#### **Open Day Buildings**

Craigmoor, Murray's Cottage (Once home to artist, Donald Friend), Hosie's Store, Beyer's' Cottage (Rarely open to public display, this cottage is left unrestored, displaying the wattle and daub building style), Ackerman's Cottage, Rose Cottage (Devonshire tea available), St Paul's Presbyterian Church, Haefliger's Cottage (Along with Murray's, this cottage is also used as a residency for visiting artists, in conjunction with the Bathurst Regional Art Gallery Residency Program), Mining Registrar, La Paloma Pottery.

**Bookings Essential,**

**Cost: 25\$/\$18 (concess.)**

**Bookings and information: ph 63378334 /email [progress@hillend.org](mailto:progress@hillend.org)**

Hill End Open Day presented by The Hill End & Tambaroora Progress Association

[www.hillend.org](http://www.hillend.org)