

# THE STAMPER BATTERY

## EASTER ISSUE (April 2006)



Haefliger Sunset-Henrietta Manning

### Easter Events

It was a lucky Easter in Hill End, not wet, only welcome rains at night for the first couple of nights. It was high density living in the Village Camping Ground; one tourist described it as an African refugee camp, Glendora was packed, even the Trough Camping Ground was full. There were 242 campers on Good Friday, Helen Trumble said. Not many visitors went through Craigmoor this time. The Royal Hall stalls presented well on the Sunday and the people flocked in like sheep to the slaughter. The P & C made a killing. There was music too, a bush band. The Market in the Hall was interesting; Grace Holloway with her paintings, Lorraine Purcell with the Pioneer's Register, Steve Hobbs with his gold and Kate and Sheena with their craftworks. It felt full and full of happiness. The Easter lamplight Service was well attended, Col Shapland reports. La Paloma held its opening of the 'Postcards from Hill End' exhibition by local artists. The Muzzleloaders were up as usual, sounding off on that blasted heath. A bushfire was put out in Ullamulla over Easter, caused by lightning. Then suddenly Easter was all over and we got our town back. RC

### The Seasons

We are half way down the slide from the heat of summer; soon we will be complaining about the cold of winter. For those outside, it has been very dry, not much rain. Though it has been very dry, this has been the wettest April in 3 years. March doesn't get much rain generally and this January we had good falls. The first frost of the year occurred on April Fools Day. RC

### Cicadas

They were out in the last days of February and assaulted us with their sound. It was unlike the end of the drought, when it was not unusual to see a dozen carcasses on a fence, then the sound was over bearing. This time, it was rarely perceptible. RC

### The Combined Villages of the Region

You may not have noticed the huge spread that the 'Advocate' gave to the Villages of the Region, it had an impact and we welcome this support, because it does give work to the businesses in town. There is generous support growing for this initiative. RC

### The Assay Cottage

It has resurfaced in a new guise as a gallery for photographs and prints of Hill End, both past and present. It was open for the first time on Open Day and worth a visit when you're down that end of town. RC

# THE STAMPER BATTERY

## EASTER ISSUE (April 2006)

### Hosie's

A childhood friend of Suzanne's, Paul Gearside, has come to Hill End to help her and will soon become a familiar face around town. We welcome him. RC

### Hosie's towing and salvage

An email from Sue Thomson at Hosie's recently- "*Had to tow a guest off embankment to Bald Hill Mine. The car was actually balancing!! Thought you might like to put this in the Stamper as Valet Parking.*" Ed.



### The General Store

Donna-lee put on a very festive display, a little bit of the Easter Show. They now have organic vegetables grown in Hill End by Terry Bradshaw (aka Willy Nelson), ideal for winter soups. Leita and Mercury have proved themselves very professional at running the Store. RC

### Rose Cottage

Betty has been doing a craft course in Bathurst and she has made some very professional dolls and bags. She said that there were lots of people over Easter, "but it was better when they left". RC

### Holterman's Corner

Entry is through the small door on the bevelled corner of Short & Tambaroora Sts and into the deep labyrinth that is Holterman's Complex. The first room is the cake shop. From there you go into the tearooms, with shelves groaning under the jams and jellies, all homemade. The next room is the information centre, with the usual tourist brochures, to one side is the Internet café. There are 2nd-hand books as well, and through an opening, the games room with those noisy car chases and shooting games. Further along is the small hardware section with some of the things you might need on a Sunday & in the front shop- giftware, which is slowly being replaced by antique objects. At the moment, it is in a state of evolution. Further along in the second part of the Complex is the bakery, with its dough mixers, ovens and cool room. This is a professional establishment and a huge investment, backed by the TAFE course that they have done. Cheryl and Steve have put in a lot of effort and we wish them and Matthew and Scott every success, it is up and running and it offers a generous feed for lunch and good cakes with strong coffee, all made on the premises. It is worth a visit, if only for a coffee. RC



Holterman Complex

# THE STAMPER BATTERY

## EASTER ISSUE (April 2006)

### Hill End Motel goes Jurassic

Bernie Baker has begun extensive landscaping employing yet another local, one with experience in that field in another lifetime. They will be planting Wollomi Pines, trees until recently presumed extinct, dating back to the dinosaurs.

RC

### Motel News

To commemorate the opening of the motel and to retain a modern history of Hill End, John Carter and Bernie Baker are extending an invitation to all families of Hill End and surrounds, to place your name on a plaque/stone (yet to be decided) to enable everyone that has a current association with the district, will become part of the change that the motel will have on the district & be remembered in 100 years from now. Your help compiling this history will be invaluable & fun for our children's children. Furthermore each of the roads, driveways and garden beds will be named after local families. If you wish to participate, compile your own family tree & brief history of your input to the district, a road or garden will then be dedicated to your family. Spaces are limited-about 20. So if you wish to participate, the earlier the better. Any questions ask John or Bernie. Family information forms will be available soon.

John Carter

[www.hillendmotel.com](http://www.hillendmotel.com)

### Hill End Family History

The last 2 months have been busy with people asking about their ancestors. Names enquired about:-Ellis, Dedicoat, Goninan, Rennie, Murray, Trevena, Tierney, McAllister, Golsby, Toulos, Greenwood/Grimwood, Grady, Golsby, Simons.

Daphne Shead

[www.hillendfamilyhistory.com](http://www.hillendfamilyhistory.com)

### April Open Day

Open Day brought 87 people & we were fortunate with warm sunshine, compared with the cruel wind of the previous day. It is in its 5<sup>th</sup> year and HEPTA thanks those who opened their homes and the varied volunteers who helped. Open Day is a good fundraiser for the Association and brings new people to town. The Treasurer's Report for HETPA for the year reveals a total income of \$ 9,128 of which Craigmoor & Open Day brought 41%. This is a healthy result & HEPTA thanks Jim Shanahan for his diligent work as Treasurer & David Turcato as Auditor.

RC

### Signature Rock

Signature Rock nestled against the embankment atop the bridal track has a variety of interesting signatures engraved, the last being from the 1920's. Below is the earliest signature carved into the rock in 1890 by one RJA. Ed.



### Kitty's Falls

The photograph in a past edition is a forgery, according to Robert Anderson. He was there recently and there was, he said, absolutely none of the water depicted in Rob Payne's photo.

RC

# THE STAMPER BATTERY

## EASTER ISSUE (April 2006)

### Apology to Joan Auld

Never ever listen to anything said at the Pub. Joan Auld put me right; no she didn't break a leg, no she didn't jump over a rolling log, and no she didn't fall onto an axe. But, she did injure herself somehow and she has to walk with a stick and Ray is very thoughtful in helping her to get to the car. RC

### Robert and Robyn Auld

Where are they? Joan Auld says that one of sisters says that they will be back next week, "but she's been saying that all year" Joan added. RC

### Lynda Tompkins

She suffered a couple of heart attacks a while ago, but those who know Lynda know that she will come through. We all hope that she will take heed. Alas, more recent reports say that she is back in hospital, though she should be out by now; we wish her well. RC

### Peter Seaman raffle

As you will remember from the last issue, Peter lost a lot of electrical equipment when lightning struck his house. A couple of townspeople donated a prize of an electric saw for a raffle and it raised \$ 605 from the patrons of the Royal Hotel and the Post Office. Peter would like to thank everyone for their support. RC

### Sweet 16

Hayley Mobbs turned 16, her party was held at home and as said of the previous party there, "It was positively medieval in its bountiful fare, laid on tables groaning under the weight". The miserable morning wind lifted for a clear evening with two fire drums glowing with warmth that matched that of the hospitality. RC

### Sweet 6 turn

Stella Sciberras turned 6 recently, her party was held in Lyle Park. Ed.

### The Hill End Gathering

Lorraine Purcell compiled the Pioneers Register with help of many, including Brian Hodge who wrote an introductory history and Betty and Bill Maris. Bill and Betty initiated the project and compiled the raw data, no meagre task. It sets out family information in a very professional way. It is a source document, rather than the stories of families. Daphne Shead was given one and it can be viewed at the Morgue. There are gaps in the current pioneer families living here, and omissions can be lodged for the next edition, so have look. The launch of the Register was the highlight of the Gathering this year in the Botanical Gardens. In the month since, 300 of 500 printed have been sold, so the effort has been well worth it. RC

### The Sofala Show

A great event & successful for Hill End. Big prizes: Maryanne Kimm 1<sup>st</sup>, Leita Kimm 2<sup>nd</sup> Hayley Mobbs 3<sup>rd</sup> in the chainsaw event, and Hayley 4<sup>th</sup> in the Iron Woman event. Brian Hodge got 1<sup>st</sup> for his zucchinis & 2<sup>nd</sup> for his tomatoes. Steve and Cheryl Rattray won for their cakes and jams, Daniel Kojta, (a former Artist-in-Residence) won in photography. The school did well in the Craft Section. Betty Martin was there and she sends her regards to Hill End. RC

### Curtains for Hill End

Lynne Munro 63378137 makes curtains professionally in any style. RC

# THE STAMPER BATTERY

## EASTER ISSUE (April 2006)

### Hill End Schooldays 1950's

When I was a schoolgirl in the 1950's, a group of us decided we would call ourselves the Secret Six - obviously influenced by Enid Blyton's Secret Seven books! I was the second youngest in the group - whose ages ranged from around 11 to 13 years. We held "secret meetings" and made badges from large buttons which we covered with plain material and then embroidered with the initials "S.S". We would meet after school to have little "adventures" which would include riding our bikes; hiking up Bald Hill; walking out to Kissing Point Lookout and climbing up Split Rock; walking down Oakey Creek to Kitty's Falls, etc. One of these "adventures" was climbing through a tunnel which was formed by years of erosion in the creek below the Camping Area. It had a large opening - possibly the remains of an old shaft from many years before - which was halfway along, where we could sit and look out. We had our "secret meetings" in there a couple of times too. I shudder when I think about it now - it was no doubt a very dangerous and silly thing to do as it could have collapsed onto us at any time and no-one would have known where we were! One Friday afternoon when we - the "Secret Six" - were supposed to be doing sports, the six of us arranged to meet out in the block next to school, where the old church ruins are. This was a favourite playing area for us children when I was growing up. We had climbed up a tree next to the Great Western Store, when we saw a pall of black smoke coming from behind my house in Reef Street. Without a thought for the fact that we were supposed to be at school, some of us raced up to see what was happening. Mr. Bill Denman had lit a fire over behind my house, to burn off some of the blackberries, but unfortunately a gusty wind came up and it started a grass fire, which got away from him. My auntie, Betty Goodwin, had also seen the smoke and was trying to help him bring it under control, but it was beginning to spread rapidly. We

children broke off gum tree branches and used them to start beating the flames out. Thankfully Auntie Betty had rung for the fire tender, and in no time they arrived and the men then sent us on our way. By this time school had finished so we all went up to the General Store all very excited about our "little adventure". Some time later we saw an ambulance go through town heading towards the direction of the fire, and then a short time later it departed with an "unknown" patient in the back. I found out later it was my uncle, Bruce Goodwin. He had been fighting the fire - which had spread rapidly towards the Connie Dam by this stage, burning trees as well as grass and blackberries - when he suffered a bad fall and injured his back. (He was in plaster for some months, but thankfully he recovered remarkably well). When we returned to school on the Monday however, we were severely reprimanded for our truancy, and were punished by being put on detention for the rest of the week. Carol McCance-Wright

### Hill End Cricket

The Water Police were up here yet again for the annual match.

Much quieter than past visits, as Maxine said last year, they are all getting a bit older. It was a very pleasant day with some of the opposing side sitting in deck chairs.

Hill End made 440 runs, according to EJ Long and unfortunately the Water Police only made 339 runs, obviously it was a close match and the result was hotly contested that evening at the Royal Hotel.

The reverse occurred in the match against Hargraves, who won with 166, compared with Hill End's 165 in glorious sunshine.

The similarity in the margins is coincidental.

RC

# THE STAMPER BATTERY

## EASTER ISSUE (April 2006)

### Two Queens?

An observant patron of the Royal recently noticed that the Royal Hotel sign has a Janusian aspect. (In artistic terms- a double faced portrait.) The sign was painted by Donald Friend for a Holterman celebration in the early 1950's, our keen observer noticed that Queen Victoria's visage is portrayed differently on both sides of the hanging sign. He also suggested that perhaps the two queens portrayed were actually a self portrait by Donald and a portrait of his partner Attilio. The difference when pointed out is clearly obvious, one a thinner, more aquiline face, the other more rounded. Yet for decades no one else appears to have noticed the fact. The joke's on us perhaps. Ed.



**\*Janus was the Roman god of gates, doors, beginnings and endings, hence represented with a double-faced head, each looking in opposite directions**



Janus

### Photographic Exhibition at Visitors' Centre

Gavin Wilson, the curator began by pointing out "the Beaufoy Merlin prints illustrate the excellent work done by the Mitchell Library in restoration". Fred Smith, 'Western Advocate' photographer in the 50s caught the spirit of the Gold Centenary celebrated in Hill End. Tamara Dean and Dean Sewell captured people of the town in typical, but somewhat stylised poses, standing isolated from each other. Gavin went on to describe Cathy Laudenbach, Brett Hilder and Greg Weight as 'Romantic Photographers'. That chair of Greg's was in yet again, time it went to the tip. John Gallo of Hill End Gold described Luke Sciberras in Brett's photo as very Somerset Maugham-ish, while in Tamara and Dean's photo, Luke is holding a glass of red, typical of him. Cathy Laudenbach's photos are huge, the centrepiece of the exhibition is her one of the Royal Hall, its power comes from its size. Her second photo features the tiled stove at Murray's made famous by Donald Friend. Brett Hilder's photo of 'the Night before Christmas' shows the Hotel all lit up at night and captures the feeling of the season. Tim Brook did some interesting work using the reflections in glass.. Gavin gave special thanks to Joan Gilmore, Lorna Shapland and Betty Jeffree for the food they voluntarily. The nice thing about these occasions is how good the ladies look, all dressed up, especially this time, Kerri Burns. RC

The next show 'Mining the Archive', again to be curated by Gavin, will contain works mined from the Bathurst Regional Art Gallery archives. RC

# THE STAMPER BATTERY

## EASTER ISSUE (April 2006)

### Hill End and the National Art School

Since the mid 20<sup>th</sup> Century, the National Art School has held strong historical links with the village of Hill End. The rich colours of the bare soil and the undulating mounds of the 'man-made' landscape of the Golden Mile provided painters with a quintessentially Australian subject. Among the teachers and former students to live and work in the village were Jean Bellette, Margaret Olley, John Olsen, John Firth-Smith and Jeffrey Smart. As nature gradually claims back some of the formerly barren areas the village, its people and its environs continue to inspire staff, students and alumni of the School.

Miriam Williamson  
National Art School



National Art School on Turon-1960's

\*Note the change in times- the driver carries a bandolier and gun! Art students were wilder back then it appears  
Is that Rita Auld on the far right?

### Jean Bellette

Jean Bellette was a highly respected Australian artist who as well as teaching at the National Art School, twice won the Sulman Prize in the 1940s. She married artist Paul Haefliger and the cottage that they bought in Hill End is now an artists' residency administered by Bathurst Regional Art Gallery. Ed.



Jean Bellette-photo Max Dupain

### Sculpture Students at Bryant's

15 senior sculpture students from the National Art School spent a week here sketching and preparing work recently. They stayed at various places around town. Eventually, Bryant's will be made habitable, but that takes a long time. RC

### Hill End in The Alice

The composite portrait Henrietta Manning put together of the students of the Hill End Public School, the photographs of Cathy Laudenbach and Sarah-Mace Dennis and Svenja Kratz have been selected for entry in the Alice Springs Art Prize. All have been Artists-in-Residence in Hill End. RC

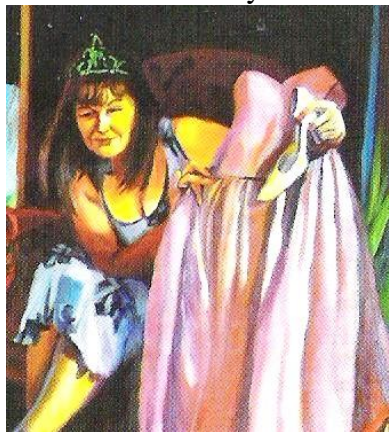
### Rosemary Valadon

Rosemary intends moving up to the Pink House after her exhibition in May. "I am keeping a small place in Sydney, but I will be mainly here, so I can concentrate on my work and the garden". An exhibition at the Macquarie Uni Art Gallery recently featured Rosemary's work. She described it as 'the revisiting of old friends', being a survey of years

# THE STAMPER BATTERY

## EASTER ISSUE (April 2006)

of work. The Opening was well represented by Hill End. The paintings are lush with bright strong colours and figures in extraordinary contexts. Her next exhibition, 'Hill End Stories' will be at Eva Breurer Gallery **RC**



Rosemary Valadon-Pretty in pink

### Ana Young

Ana was recently selected to be in a show at the ANU Art Gallery, Canberra. "The surfaces of Hill End lend themselves to the thick application of paint", she said. "It is a landscape with many textures. You just have this sense of appearance and disappearance of the fences in the twilight. The fences are no longer just fences; they are enclosures with memories and of buildings no longer there. The fences are a bit like the corrugated iron; they are worn, rather like the quilts in Craigmoor, patched and faded. Nature has imposed itself on these images and that's what makes Hill End. All the colours of the sheds are reflected in the fences and the rhythm of the fencing. Endless permutations of colour, weaving in and out of time." **RC**



Ana Young-Fence

### Postcards from Hill End

The 14 artists in this Show responded to the theme of "postcard size artworks to celebrate the beauty and the diversity of this landscape". The Easter Exhibition at the Old Catholic Church is a regular feature of the La Paloma Gallery and this year the artists came from Hill End. Danelle Bergstrom, John FirthSmith, Janet Haslett, Brett Hilder, Raquel Mazzina, Michael Ramsden, Luke Sciberras, Hui Selwood, Gria Shead, Rosemary Valadon, Julie Williams, Glenn Woodley, Ana Young and of course Lino Alvarez. The landscape of Hill End, seen through different eyes as. There certainly is diversity in the styles of the 14 and the imposition of such a small size was interesting, because most of the artists normally work on a larger scale. **RC**

### Henrietta returns

Henrietta will have her next show at Hill End. She did heaps of portraits whilst here and you might just be in there, opening on 8<sup>th</sup> July.(Currently on show at BRAG until 7<sup>th</sup> May.) The Bathurst Gallery will be involved in Shows at the Visitors' Centre in the future through the partnership of the Hill End Artist-in-Residence Program and the Parks Service. "It will be a platform to show the works of the Artists-in-Residence, the work of local artists and works from the Collection", said Sarah Gurich from the Gallery. "Henrietta's will be a perfect exhibition to kick off with, because there was such a Community Spirit in the work she did there". **RC**



Cottage Hill End-Henrietta Manning



# THE STAMPER BATTERY

## EASTER ISSUE (April 2006)

### Artists in Residence

#### **Meg Buchanan-Murray's Cottage**

"I came to Hill End to look at a different landscape and colours, instead I found corrugated iron and that's what I've concentrated on. I have converted the tin and rust marks into imaginary landscapes. Golden Gully I found quite creepy. I went there to draw, but I couldn't stay.. People have come here looking for different things and have found different things; you only have to look at the artists over the last 50 years, you will find remarkably different interpretations. Everyone here was enormously helpful and friendly. They could be bloody sick of artists, but they don't seem to be. They are generous with their time and that's what makes it special here for artists".

RC

#### **Barbara McKay-Haefliger's Cottage**

"For me, the colours here are warm and they have an intense earthiness, Hill End is unique, a historical part of our Australian culture." Barbara had come here as a student. "Our teachers, David Strachen & John Olsen had talked about the area. The trip left a memory of the landscape and energy. It's gone the full circle; the mature age artist comes back and still able to respond to the excitement of the young artist. I try to paint a landscape that is a composite of being there. For instance, from Kissing Point there is that feeling of flying into the landscape. It evokes a beautiful visual poetry. The experience of painting is finding the magic place between the reality of the landscape itself and the personal response to the feeling created. When the two meet, there is that magic moment when a painting comes to life."

RC

### Hill End Public School News

#### **Red Hill Excursion**

Students and teachers attended the Kid's Conference at Gulgong at the end of term one. On the 2 day camp students mixed with students from other small school exchanging ideas and engaging in games, music, tree planting, history and dance. It is hoped that this will become an annual event. Congratulations go to our students for their good behaviour at the camp.

#### **Easter Market**

The Hill End P&C held a successful Easter Market/Hold up raising funds for the school to help with the many and varied activities and excursions the students are involved in. Thank you and well done to all those who put their time and effort into making the Easter Market such a success.

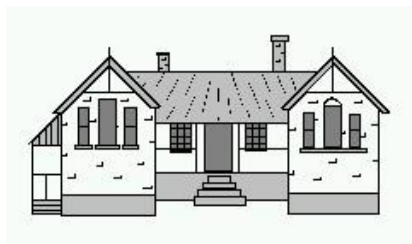
#### **Captain Can**

'Captain Can' Eddie Long's efforts, have the seen the school benefit with \$46.00. Thank you also to the Hill End Cricket Club for their efforts with can collecting, they raised \$26.00.

#### **ANZAC Service**

Thank you to all parents and students who attended the ANZAC Service during the school holidays. Congratulations to our School Captains Jessica Gilmore and Jade Williams for their contribution to the service.

Gaye Shanahan  
Hill End Public School



# THE STAMPER BATTERY

## EASTER ISSUE (April 2006)

### Hill End Voluntary Bushfire Brigade

#### The Late Don Edwards

Former Brigade President Donald Edwards passed away recently. Don was involved in all facets of the brigade from fire fighting to administrative matters. Don with others, was instrumental in fund-raising which saw the construction of the Hill End Swimming Pool. For his work with the brigade Don was made a life member in 1996. The brigade extends its sympathy to his family and friends. Don is survived by wife Joan, daughter Doune and son Scott.

#### Brigade History

You may recall that the brigade discovered three photos of members taken in 1871. Two of the images have been identified as having been taken in what is now the rear of the school grounds.

#### Callouts

One false alarm and one fire on a remote part of Eversham have seen members respond in excellent fashion. 18 members and all vehicles were mobile in very short time following the report of the fire at Eversham. It is believed to have started from lightning strike.

#### Fire Hydrant Service

Brigade members have recently serviced and painted the fire hydrants throughout the village.

#### Congratulations to John Fairhall

John Fairhall has successfully completed the Basic Fire Fighting Course.

#### Advance Notice

The Brigade annual general meeting will be held in the dining room of the Royal Hotel at 2pm on Saturday 24<sup>th</sup> June 2006

### Memberships

If you are considering joining please contact Brigade Secretary Maxine Anderson.

Membership \$20.00

Concession Membership \$10.00

Acreage Fee \$15 .00 per 1000 acres.

**Jim Shanahan**  
President/Deputy Captain

### Hill End Police Report

A 54-year-old male was arrested in Tambaroora for driving whilst disqualified and a warrant has been issued.

A house was broken into at Sally's Flat and a small amount of property was stolen. Anyone with information should contact me anonymously.

An assault occurred outside the Royal Hotel and Court Appearance Notices have been issued.

The Easter Weekend was a success with a large number of tourists and everyone was well behaved in town and along the Bridle Track. There were the most people down there that I've seen in my three years.

**Jim Allan**  
Senior Constable

### Clinic Report

#### Dr Wilson's next visit 2 May

Dr Wilson gave flu vaccinations last month and any latecomers should make an appointment for his next visit.

**David Turcato**  
Nurse Practitioner

### Hill End Library

The Library Van comes every six weeks and the next visit will be on Wednesday, 17<sup>th</sup> May, when there will be a change of titles at the General Store. Suggestions are welcome. Library Van next visit-  
**Wed 17<sup>th</sup> May**

RC

# THE STAMPER BATTERY

## EASTER ISSUE (April 2006)

### Mudgee Council

According to Col Shapland, the LEP is still out in the public arena for a few more weeks.

Mudgee has a new Mayor, James Lonergan of a family that first came to Mudgee in the 1830s. RC

### Roads

The potholers came back a second time. It's always good to see them in their magic truck that does it all. Gone are the days when workers worked; now they just push buttons to make things happen. The Bathurst Road has been graded recently and that's always a joy, but it soon washboards above Monkey Hill. Council is hopeful that it can seal that stretch soon. Roads within the Village have been cared for; the culvert in English Lane has been sheeted and Thompson's Lane topped up; both used to be quagmires after rain. Some verges have been graded to prevent puddling, which undermines the road base and that causes the bitumen to craze, which allows more water to get in. RC

### Tambaroora Roads



Deep creek across centre of Tambaroora back rd  
An ambulance recently couldn't get down Abbott's Lane, the lane to Ted Abbott's. It's a Crown road, Sheena Goodwin, HETPA President said," the

Land's Department doesn't want to spend any money on it and Council don't want to gain ownership of it." RC



Hazardous state of causeway towards Abbott's Ln

### ANZAC Day 2006

The village celebrated the 91st anniversary in the usual fashion. At the Service at the War Memorial, Jim Shanahan began, "our Commemoration Service today does not seek to glorify war, but on the contrary, its purpose is to condemn war in all its forms". Each year Jim tells the story of a unit in the Armed Forces, this year it was the story of the Kokoda Trail. Rick Burns, Bob Fraser, Albert Mobbs and Jim Allan also spoke, making it a town event. The School students had recorded songs for the wreath laying and their voices added to the poignancy of the occasion. Karin Mainwarring reflected that the Service had been informative. RC



The Company has suspended itself from trading, pending an announcement to the Stock Exchange. We await the news with bated breath. RC

# THE STAMPER BATTERY

## EASTER ISSUE (April 2006)

### HETPA President's Report

The AGM elected a new committee. Myself-President, Ross Brown-Vice President, Glenn Woodley-Secretary, Jim Shanahan-Treasurer, Karin Mainwaring-Ordinary Member. We look forward to another year of constructive effort and appeal to members to attend and contribute their opinions at HETPA meetings. Ongoing discussions and planning include the playground and street signage.

Another successful Open Day was held April 2<sup>nd</sup>. Linking the day again with National Trust Heritage Week attracted many visitors from Sydney as well as local visitors. The success of these days as always depends on the work of all the volunteers and the generosity of those opening their homes. Thank you to everyone for your support.

The Dept of Mineral Resources will soon commence capping selected mine shafts in the area of the Bald Hill Mine Walk.

The CSO week end workers continue to do valuable work around the village. Recently clearing the overhanging vegetation and verges of Warry's Road, maintenance of the Cricket Ground and the Bathurst Rd entrance to the village.

Don't forget to renew your membership to receive the Stamper Battery. Its 2 monthly publication is as usual due the great voluntary efforts of Ronald Charles and Glenn Woodley.

**Sheena Goodwin  
President  
HETPA**

### HETPA Membership

Stamper Battery contributions and membership are again encouraged.

Stamper contributions are always welcome, (either text or images) should pertain to Hill End, be no more than 200 words, and preferably be presented on disc or via email.

#### Next deadline- June 15<sup>th</sup>

Due to large amount of input and information, as well as time taken to correlate issue, contributions received after said date will not make publication of that issue.

Membership is \$ 10 per annum OR part thereof, Concession \$ 5 p.a. There is a necessary small surcharge for those living outside of Hill End of \$ 3 for postage.

Receiving your copy of The Stamper Battery via email, offers a colour issue, and no postage cost, so if you do have email, please chose to receive your copy via this method. Ed.



Stamper Battery-Hill End